



MAGNA

Live the live sound



FALL 2025 SPEAKER CATALOG



Magna is a brand of high-quality audio products whose DNA is in their design and performance, proudly handmade in Brazil.

Initially, Magna's products were distinguished by their beauty, artistic impression, or discretion. Furthermore, when they are played, there is a second enchantment: clarity and power.

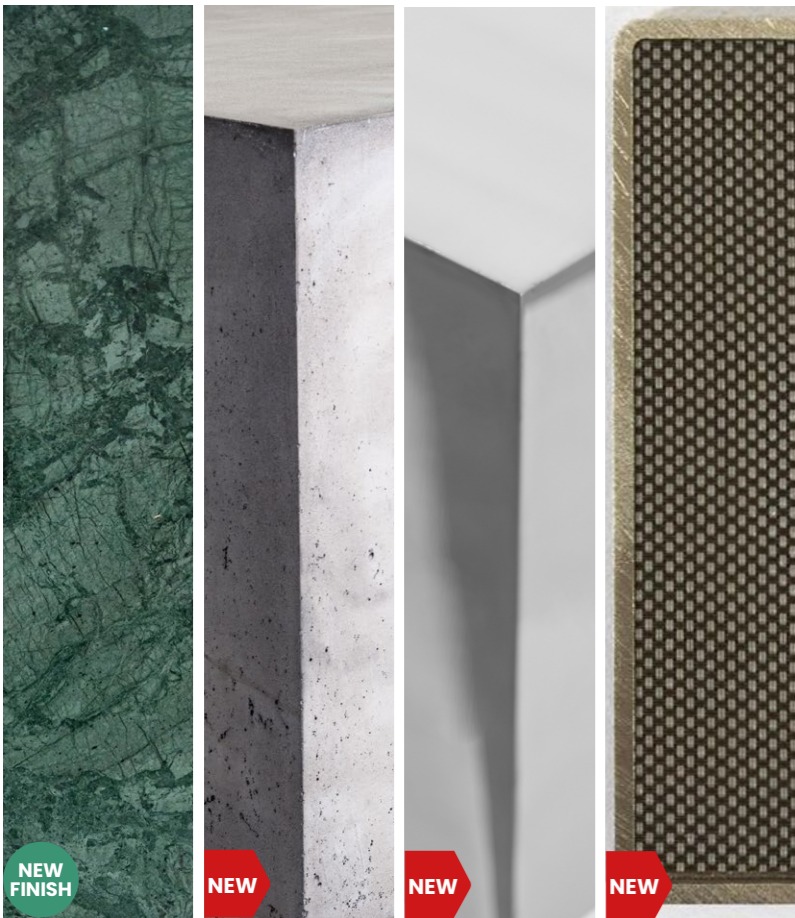
All products are designed to integrate into the environment where they will be installed, or to become differentials when they need to be noticed.

In addition to the numerous finishing options available in the catalog, it is possible to customize every product, making them unique and fitting into any decoration project without losing the audio quality already recognized in the brand's products.

Magna was created by two entrepreneurs who believed in a dream.

Luciano Vieira, Chief Technology Officer, is responsible for all development involving Magna products. Detail-oriented, Luciano does not allow anything to be out of his control and ensures that all products reach incredibly high-quality standards and are easy to install.

Daniel Lima, Chief Design Officer, combines all technical requirements with an innovative design and impeccable finishes and uses his experience in lighting techniques to create products that mix design with lamps. He is also responsible for the sales and marketing of the brand.



NEW FINISH

NEW

NEW

NEW

Finishes

Brutalist

Alloy

Micro-Framed

01

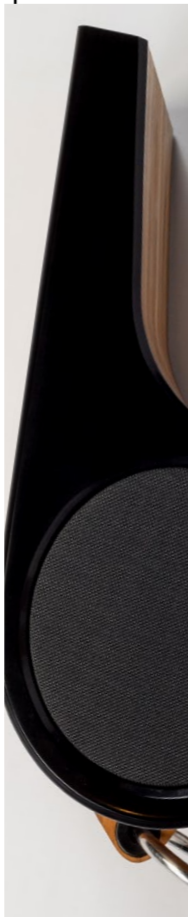
02

03

04

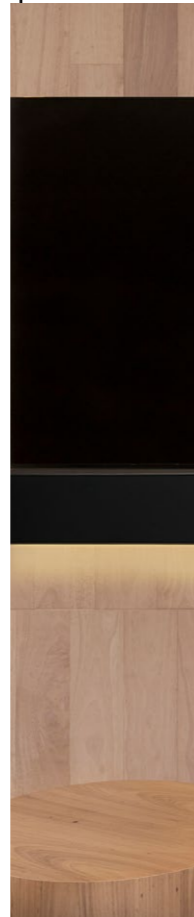
05

Apito



06

Cinemarray



07

Oasis



Polly Series

Aura Series

Outline Series

Magnarray

08

09

10

11

12

Surface Series



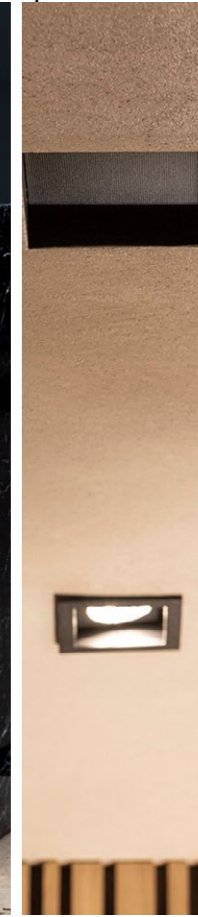
13

Rock Series



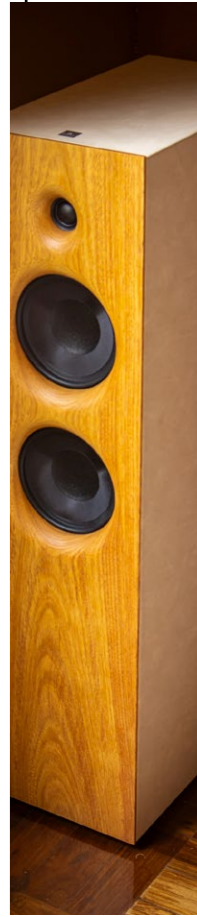
14

NoFrame



15

Designed



FINISHING GUIDE

*Specifications are subject to change without notice.
The 3D file can be downloaded from the website.

[Back](#)

NEW FINISH POLISHED ALUMINUM

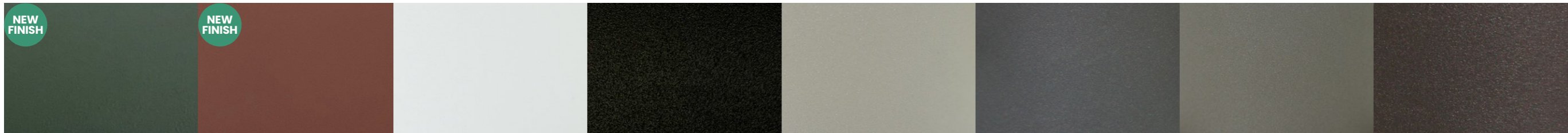


Magna's Argenta is the ultimate expression of refinement: a mirror-polished aluminum finish for interior spaces, reflecting its surroundings with elegance. Designed to amplify light and form, it integrates seamlessly into high-end architecture and interior design. Initially available on Aura and Outline Series, and extended to Alloy Subwoofers by late 2025 | Only for indoor use.

ARGT - Argenta Polished Aluminum

ALUMINUM POWDER COATED

**CUST - Custom Cabinet



NEW FINISH
OLGR | OLV - Olive Green Painted Aluminum

NEW FINISH
COGN | CGN - Cognac Painted Aluminum

WHTA | WAL - White Painted Aluminum

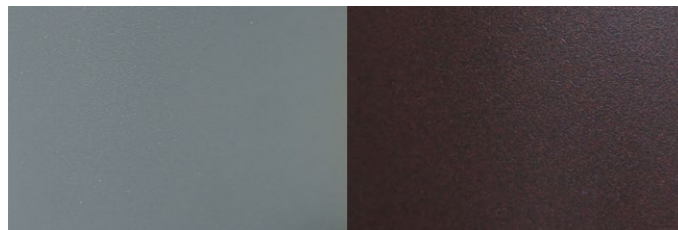
BLKE | BAL - Black Painted Aluminum

SAND | SDA - Sand Painted Aluminum

SGRY | SGA - Shiny Gray Painted Aluminum

CHAM | CHA - Champagne Painted Aluminum

SBRW | SBA - Shiny Brown Painted Aluminum



SSVR | SSV - Shiny Silver Painted Aluminum

CORT | CTA - Corten Steel Painted Aluminum

ALUMINUM ANODIZED



GOLD - Gold Anodized Aluminum

INOX - Inox Anodized Aluminum

NATU - Natural Anodized Aluminum

BRON - Bronze Anodized Aluminum



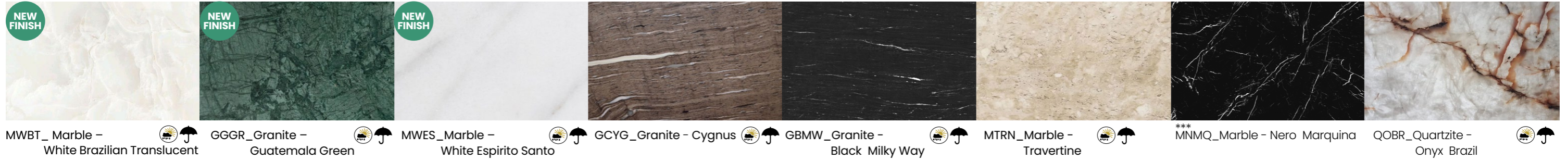
FINISHING GUIDE

* Specifications are subject to change without notice.
The 3D file can be downloaded from the website.

[Back](#)

STONES

***A protective cover is recommended for outdoor use of Nero Marquina Marble



MWBT_Marble - White Brazilian Translucent

GGGR_Granite - Guatemala Green

MWES_Marble - White Espirito Santo

GCYG_Granite - Cygnus

GBMW_Granite - Black Milky Way

MTRN_Marble - Travertine

***MNMQ_Marble - Nero Marquina

QOBR_Quartzite - Onyx Brazil



MRRT_Marble - Roman Rustic Travertine

MBCR_Marble - Bianco Carrara

QABG_Quartzite - Absolute Gray

Our natural stone and concrete elements are thoughtfully selected for both their aesthetic beauty and durability in outdoor settings. However, it is important to note that over time, natural stone surfaces may gradually lose some of their brightness and color due to weather exposure and environmental conditions. To maintain their appearance, we recommend periodic cleaning and routine care. Magna also provides covers to protect the speakers - sold separately.

NEW FINISHES CONCRETE



CMTE - Concrete Mattone

CTCO - Concrete Terracotta

CDGR - Concrete Dark Gray

CNAT - Concrete Natural

CWHT - Concrete White

CBLK - Concrete Blach

SPEAKER FRONT



BWW - Brazilian Walnut Wood (Canela)

BOW - Brazilian Oak Wood (Cerejeira)

EBN - Ebonized Wood

BLKE - Black Lacquer

WTHE - White Lacquer



FINISHING GUIDE

* Specifications are subject to change without notice.
The 3D file can be downloaded from the website.

[Back](#)

FABRIC



WTX - White Textured

BTX - Black Textured

GMX - Gray Mixed

TRR - Terra

NST - Natural Straw
Pattern

LGT - Light Green
Texture Fabric

BBT - Boucle Blush
Texture Fabric

BRT - Brown Texture
Fabric

BRX - Brown Mixed

BEX - Beige Mixed

NEW
FINISHES

NATURAL LEATHER



ILBK - Italian Black Leather

ILOW - Italian OffWhite
Leather

ILDG - Italian Dark Gray
Leather

ILLC - Italian Light Caramel
Leather

ILBG - Italian Beige Leather

WOVEN CORD



CBLK - Black

CCBN - Carbon

CGRY - Gray

COLV - Olive

CPER - Pearl

LIGHTING



12V L27: LED 2700K



12V L30: LED 3000K



12V LB27*: LED BLACK 2700K *POLLY 240° | 360°



BRUTALIST

OUTDOOR | INDOOR

Brutalist introduces a bold concept to the world of audio: a subwoofer sculpted in concrete. With minimalist lines and four refined color variations – Terracotta, Dark Gray, White, Mattone, Black, and Natural – it embodies strength, urban elegance, and a unique architectural presence.

Equipped with a 10" 300W RMS driver, the Brutalist delivers deep and immersive bass, transforming every space into an experience that resonates both within the room and within the listener's emotions. More than just equipment, it is a design piece that seamlessly integrates aesthetics and performance.

Brutalist is not just about audio. It is sound architecture – a piece that translates the fusion of acoustic engineering and sculptural design, raising the standard of premium listening experiences.



BRUTALIST IN MATTONE CONCRETE



BRUTALIST IN MATTONE CONCRETE



BRUTALIST IN NATURAL CONCRETE



BRUTALIST IN NATURAL CONCRETE



ALLOY

INDOOR | OUTDOOR

Alloy elevates audio design to a new level of contemporary sophistication, offering a collection of finishes that combine modernity and versatility. Available in ten painted versions and in the new special edition Argenta, with mirrored anodized aluminum, it integrates seamlessly into different spaces with unmistakable elegance.

Equipped with a 10" passive driver and a recommended 300W RMS amplifier, Alloy delivers impactful and immersive bass while adding a touch of brilliance and exclusivity to any environment. More than a subwoofer, it is a design piece that unites acoustic performance with avant-garde aesthetics.



ALLOY IN ARGENTA



ALLOY IN ARGENTA



ALLOY IN ARGENTA



ALLOY IN ARGENTA

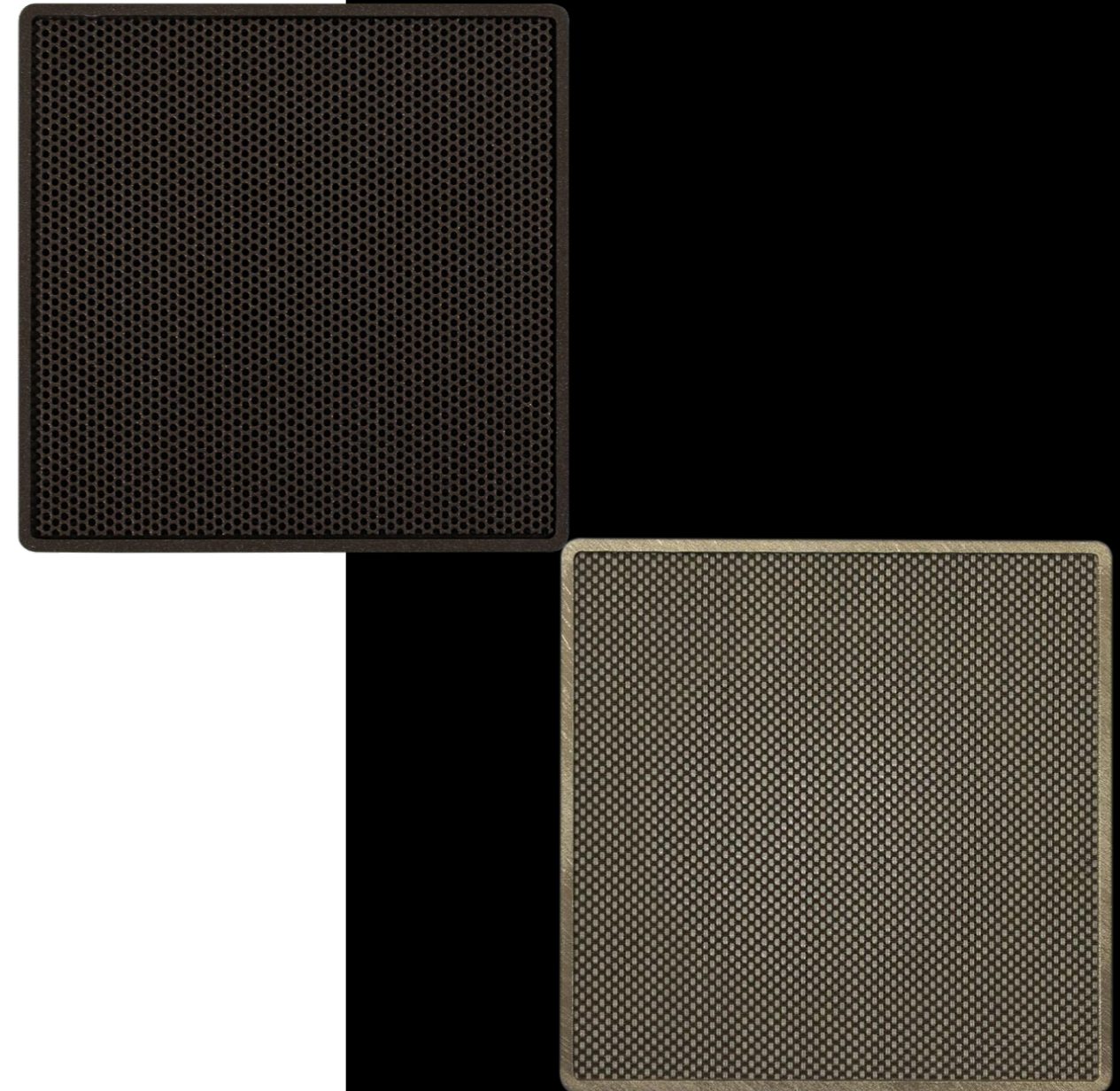
MICRO-FRAMED

INDOOR

The new Micro-Framed line redefines architectural integration through purposeful simplicity. Inspired by the sophistication of Magna's renowned NoFrame family, Micro-Framed combines premium anodized finishes with a choice of aluminum or fabric grilles, delivering full-range, high-fidelity sound that blends seamlessly into contemporary interiors. With its ultra-slim micro-frame aesthetic, the design creates a discreet visual boundary that rests quietly within the ceiling plane, while refined anodized treatments harmonize effortlessly with palettes of wood, stone, lacquer, and textiles. Offering grille versatility, the collection allows you to select aluminum for a crisp, architectural expression or fabric for a softer, design-driven look.

In terms of performance, Micro-Framed ensures full-range fidelity with an immersive, room-filling presentation characterized by precise detail and stable imaging. Its seamless voicing is tuned for natural timbre in music and exceptional clarity in dialogue, while consistent coverage guarantees an even listening experience across living spaces, kitchens, corridors, and media rooms.

Purpose-built for in-ceiling installation, Micro-Framed merges discreet presence with reliable performance, making it the ideal solution for high-end residential projects that demand clean lines, architectural coherence, and uncompromised sound.





APITO

INDOOR

The Apito, awarded as one of the Best Products of 2024 at the Cedia Expo by CE Pro, goes beyond its function, transforming any environment with its touch of elegance and versatility. Constructed from certified natural teak wood, it comes in four different finishes: Natural Teak, Teak with black, Teak with white, and the Ebonized version.

In addition to the Apito, Magna has developed a portable subwoofer for pairing. The Apito Sub features a sophisticated finish in its extruded aluminum cabinet, promising not only to enhance your sound experience but also to add a modern touch to your decor. The piece is available in black or white.

The Apito and Sub set transcend mere acoustic function; they provide a complete sensory experience. That transforms your home or office into a space of pure sound immersion and style.







NATURAL TEAK WHIT WHITE ACRYLIC



EBONIZED TEAK WHIT BLACK ACRYLIC



NATURAL TEAK



NATURAL TEAK WHIT BLACK ACRYLIC AND SUB APITO IN BLACK



NATURAL TEAK



NATURAL TEAK



NATURAL TEAK AND NATURAL TEAK WHIT WHITE ACRYLIC

CINEMARRAY

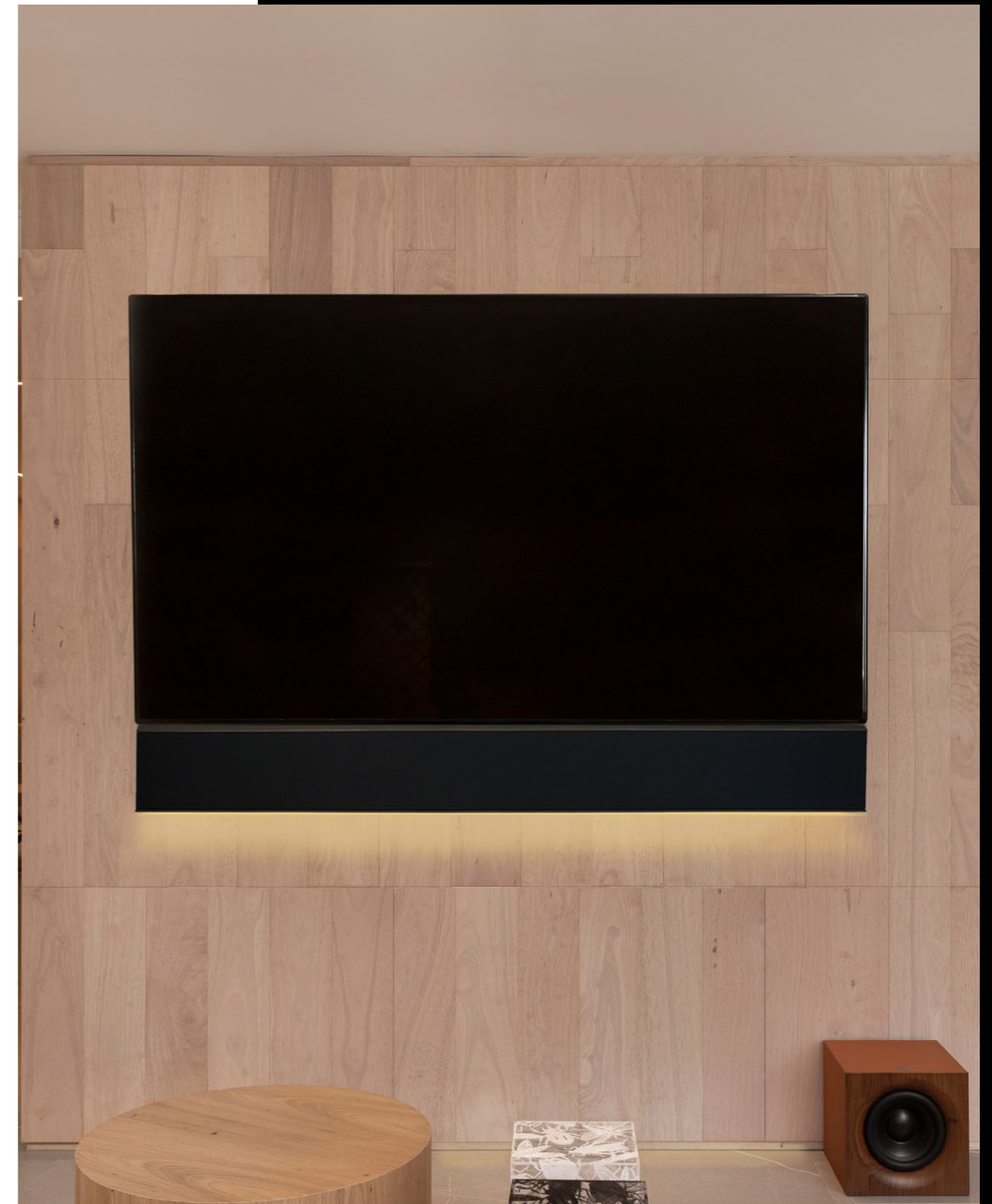
INDOOR

The Cinemarray Soundbar Custom. Designed to redefine the concept of home cinema, this soundbar combines sophisticated design with unparalleled sound quality, transforming any space into a true cinematic experience.

With versatile installation options, allowing it to be mounted on the wall or in-wall, the Cinemarray Soundbar Custom adapts seamlessly to different space configurations, delivering both stereo and multichannel audio. Its robust design, featuring an MDF and aluminum ported enclosure, ensures durability and exceptional performance.

Equipped with state-of-the-art drivers – two 3" full-range and two 5" woofers – the Cinemarray offers a frequency response of 70Hz to 20KHz and a sensitivity of 93dB SPL, delivering a rich and immersive sound experience. Supporting 150W per channel amplifiers and 4 Ohms impedance, it fills any room with clear and powerful sound.

Additionally, the Cinemarray Soundbar Custom features PWM dimmable downlights, available in warm and natural white, adding a touch of elegance and functionality to your space. Discover the pinnacle of home audio with the Cinemarray Soundbar Custom – where innovation and performance converge to elevate your entertainment experience to a new level.





OASIS



OUTDOOR

The Oasis, awarded Best Outdoor Product at Cedia Expo by rAve Pubs in both 2023 and 2024. Merges audio and art into a versatile furniture piece—a coffee table with various uses, introducing a level of functionality previously unseen in the market. Installed outdoors, it can be configured to be used as a fire pit, an ice bucket, or a simple coffee table. From the design perspective, a natural stone surface gives a quiet luxurious style that mixes with the textured woven cord wrapped around an aluminum frame, adding sophistication to any area. The optional fire pit can be ordered to be used with propane or natural gas (CSA Certified), made of stainless steel with up to 65,000 BTU of heat. It is also possible to choose between manual or electronic Bluetooth enable high/low ignition system.

Endorsing the tradition of the custom DNA of Magna, there are 10 natural stone options (marble, quartzite and granite) and 5 different woven rope choices, allowing a wide variety of finishes to match any décor. When used with the centered ice bucket, it is possible to choose from ten colors variety. From the audio aspect, the Oasis uses an advanced DSP amplifier to power six 3" full range drivers that allow 360 degrees dispersion plus two 10" subwoofers, allowing frequencies as low as 30 Hertz, creating a smooth sound experience with a total of 200W. HDMI Arc connection allows integration with TVs, and it is possible to stream and make multiroom using AirPlay2 or Chromecast, with Tidal and Spotify Connect, allowing third-party integration or more than one table to stream simultaneously. Bluetooth is also available if Wi-Fi is not present.



BIANCO CARRARA MARBLE AND WOVEN PEARL CORD WITH 2 IN 1



BIANCO CARRARA MARBLE AND WOVEN PEARL CORD WITH 2 IN 1



BIANCO CARRARA MARBLE AND WOVEN PEARL CORD WITH 2 IN 1



BIANCO CARRARA MARBLE AND WOVEN PEARL CORD WITH 2 IN 1



TRAVERTINE MARBLE WITH 2 IN 1 ICE BUCKET AND ALCOHOL FIREPLACE



NERO MARQUINA MARBLE AND WOVEN CORD BLACK WITH ICE BUCKET

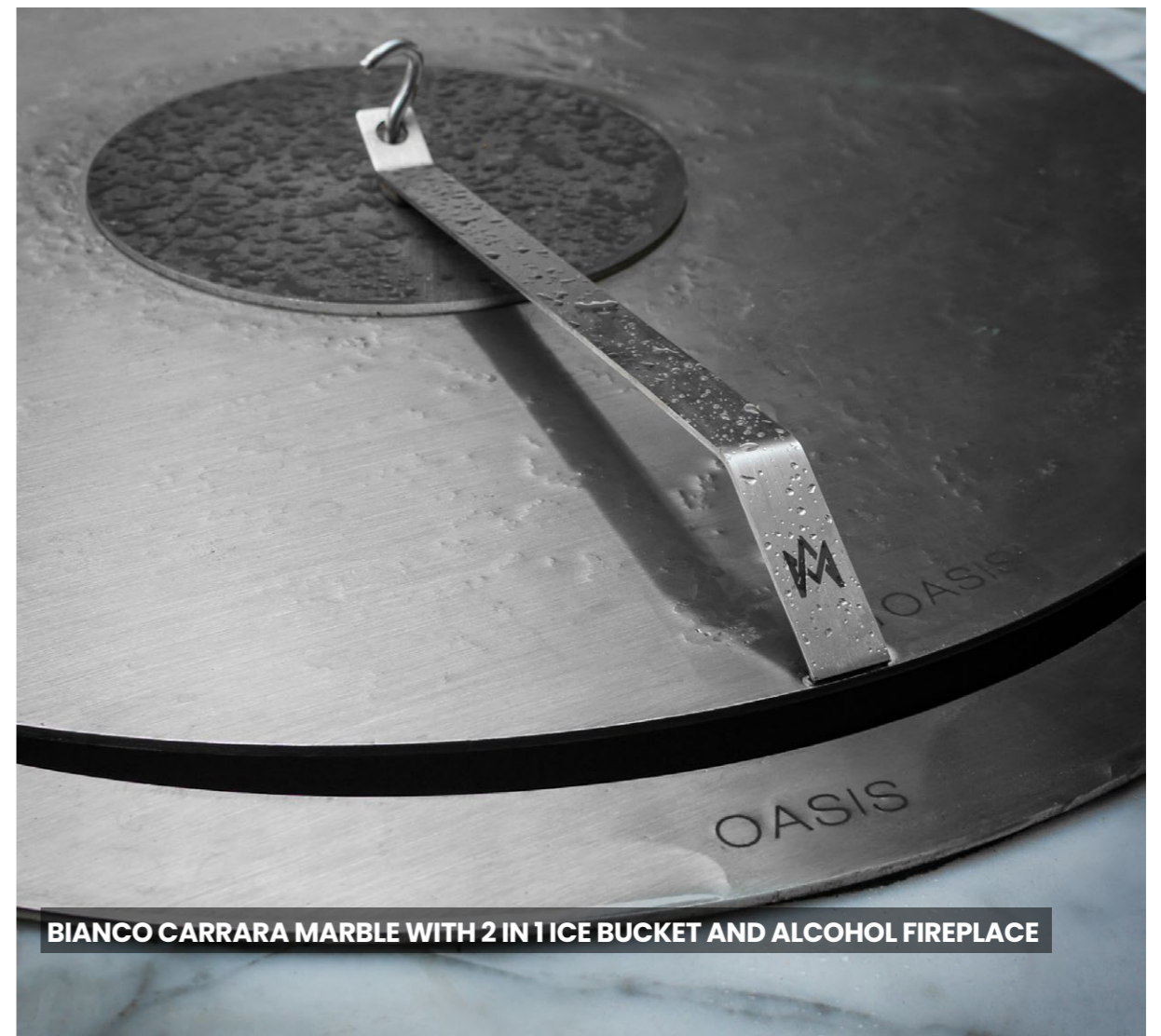




BIANCO CARRARA MARBLE WITH 2 IN 1 ICE BUCKET AND ALCOHOL FIREPLACE



BIANCO CARRARA MARBLE WITH ALCOHOL FIREPLACE



BIANCO CARRARA MARBLE WITH 2 IN 1 ICE BUCKET AND ALCOHOL FIREPLACE

POLLY SERIES

OUTDOOR

The external environment is the most challenging for a speaker. Firstly, the sun, excessive heat, rain, snow, and salt air punish outdoor products, causing technological parts such as speakers, connectors, and cabinets to spoil much faster than indoors. Secondly, quality loudspeakers need a rigid, non-resonant body. For this reason, Magna built its entire outdoor series using aluminum as the main component of its products.

The Polly Series has also expanded, now featuring the new Polly Sub 10 Dual, Polly Spot Mini 3, Polly Spot Mini 4, Polly Outland, and Polly Sub 8, which combine versatility with the signature sound quality of Magna Audio, offering solutions for different needs and environments.



POLLY 360°

It is an omnidirectional loudspeaker (available in 240° version) built with micro speakers distributed around its tower. The body includes a buried area equipped with a 10" subwoofer and LED lighting that can be dimmable. It is the ideal solution for large areas, as a single unit can cover up to 3,000sqft depending on the installation location.



POLLY IN SHINY GRAY



POLLY IN BLACK WITH BLACK LED



POLLY IN WHITE

POLLY TANK SUB

The Polly Tank Sub is poised to be a disruptive force redefining the outdoor audio experience. Instead of focusing on extremely low frequencies that are not felt outdoors and only annoy pets, Magna prioritized high SPL dispersion, so only one subwoofer can cover huge areas.

Tank is capable of delivering 124db in 38 hertz, and 127db from 50 to 85 hertz with a 101 dB sensibility – there is no other outdoor subwoofer that gets near that. To deliver this mass of sound, the Tank has three ports, allowing the performance to be outrageous, but with design-wise solutions, part of Magna DNA.

The design includes a natural stone over the piece that makes the subwoofer to be integrated into the outdoor project. Travertine finishing comes as the standard to the US market as most outdoor areas use this type of flooring, but any of the eleven Magna's natural stone options can be selected to customize the piece. In addition, five different woven cord covers can be used as a luxurious accessory, adding sophistication to any backyard.

The Tank uses a European 18" Driver, and it will assume the position of the most powerful outdoor subwoofer for the residential market, with, 1200W. The nominal impedance of 8 Ohms was planned to ease long cable runs, allowing upgrades of installations that use 4 Ohms subwoofers up to 600W.



POLLY TANK SUB IN BLACK WITH TRAVERTINE MARBLE



POLLY TANK SUB TRAVERTINE MARBLE AND WOVEN CORD OLIVE



POLLY TANK SUB IN BLACK WITH TRAVERTINE MARBLE



POLLY TANK SUB TRAVERTINE MARBLE AND WOVEN CORD OLIVE

BACKYARD SYSTEM: POLLY SPOT AND POLLY SUB

A landscape must impress with its performance and disappear into the terrain. The Backyard System is great for both situations. First, there are no other speakers on the market with their size, design, and performance. Secondly, the ten-color finishes make it vanish even in the most challenging environment.



POLLY SPOT IN BLACK



POLLY SUB 10 IN BLACK



POLLY SPOT AND POLLY SUB 10 IN CORTEN



POLLY SPOT IN WHITE



POLLY SPOT IN BLACK



POLLY SUB 10 IN CORTEN

BACKYARD ESSENTIAL: MINI POLLY SPOT 3 OR 4 AND POLLY SUB 8

Sleek design—that is your first and best impression when you see an Backyard Essential speaker. A huge sound is heard when you listen. Even from the small form factor models that were meant to be hidden in the garden, you get a big sound.

To match that size and power handling flexibility, there are ten color options, making the series a wild card for any project.



MINI POLLY SPOT 3 OR 4 IN BLACK



POLLY SUB 8 IN BLACK



POLLY SUB 8 IN BLACK

POLLY SUB 8

The Polly Sub 8 is an excellent option to increase the bass of your system. With a small cabinet, it is easy to install, making it simple to place in planters too, but its size does not reflect how powerful the sound is. The subwoofer's construction is strong, with an aluminum cabinet with ten options for powder coating, making it the ideal solution for outdoor systems.



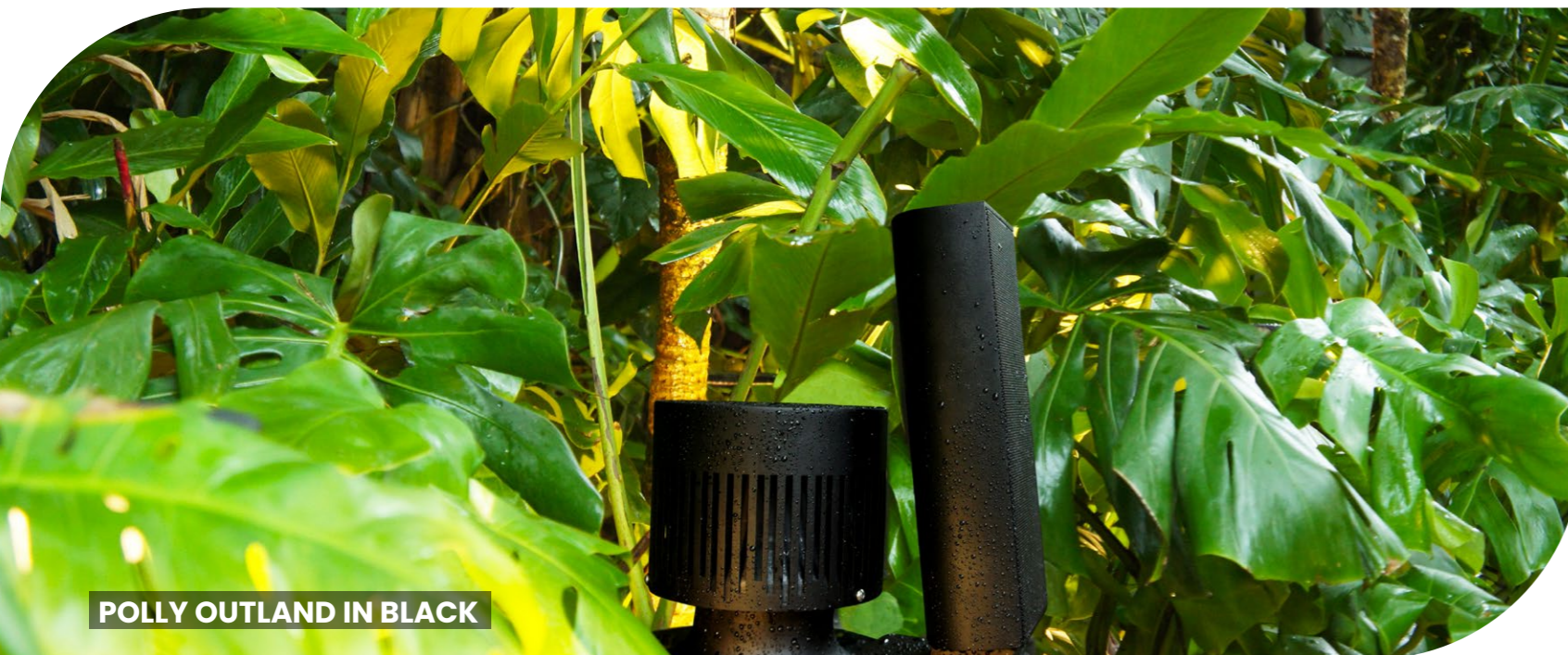
POLLY SUB 8 IN BLACK

POLLY OUTLAND

Polly Outland has the pure Magna DNA. If you are looking for a small form factor landscape satellite, there is no better solution than Polly Outland. Built into a two-way system, it uses an 8" subwoofer for the low frequencies and a hi-performance 4" full-range driver for the mids and highs.

In a regular landscape or satellite outdoor system, you need big and hi-performance subwoofers to cover the whole area, and the entry systems don't deliver them. The Polly Outland delivers one subwoofer by satellite, making the bass extremely even in the covered area.

The small in-ground sub makes the installation easy and allows it to be placed in regular-sized planters when needed. The speaker construction is strong, with an aluminum cabinet with ten options for powder coating, making it the ideal solution for outdoor systems. Try the Polly Outland and be amazed.



POLLY OUTLAND IN BLACK



POLLY OUTLAND IN BLACK



AURA SERIES

OUTDOOR | INDOOR

Design has always been one of the main focuses for Magna. The Aura Series is a clear result of this DNA, whether you can not tell if it is a speaker or a wall lighting fixture.

Aura is an all-purpose speaker, and it can be installed both indoors and outdoors, even in saunas, with LED lighting as optional. In addition, it has enormous versatility for installations, as it can be used both on the wall and on the ceiling.

Entirely built in aluminum, the Aura Series offers customizable body finishes, with anodized versions options and fabric or aluminum grills.

Available in four different sizes, the line-up has two 40W models, one 60W, one 80W, and one with an incredible 125W performance, focused on significant outdoor areas, plus an 8" 200W subwoofer.



AURA MINI IN SHINY GRAY AND TERRA FABRIC GRILL



AURA MINI IN SHINY GRAY AND TERRA FABRIC GRILL



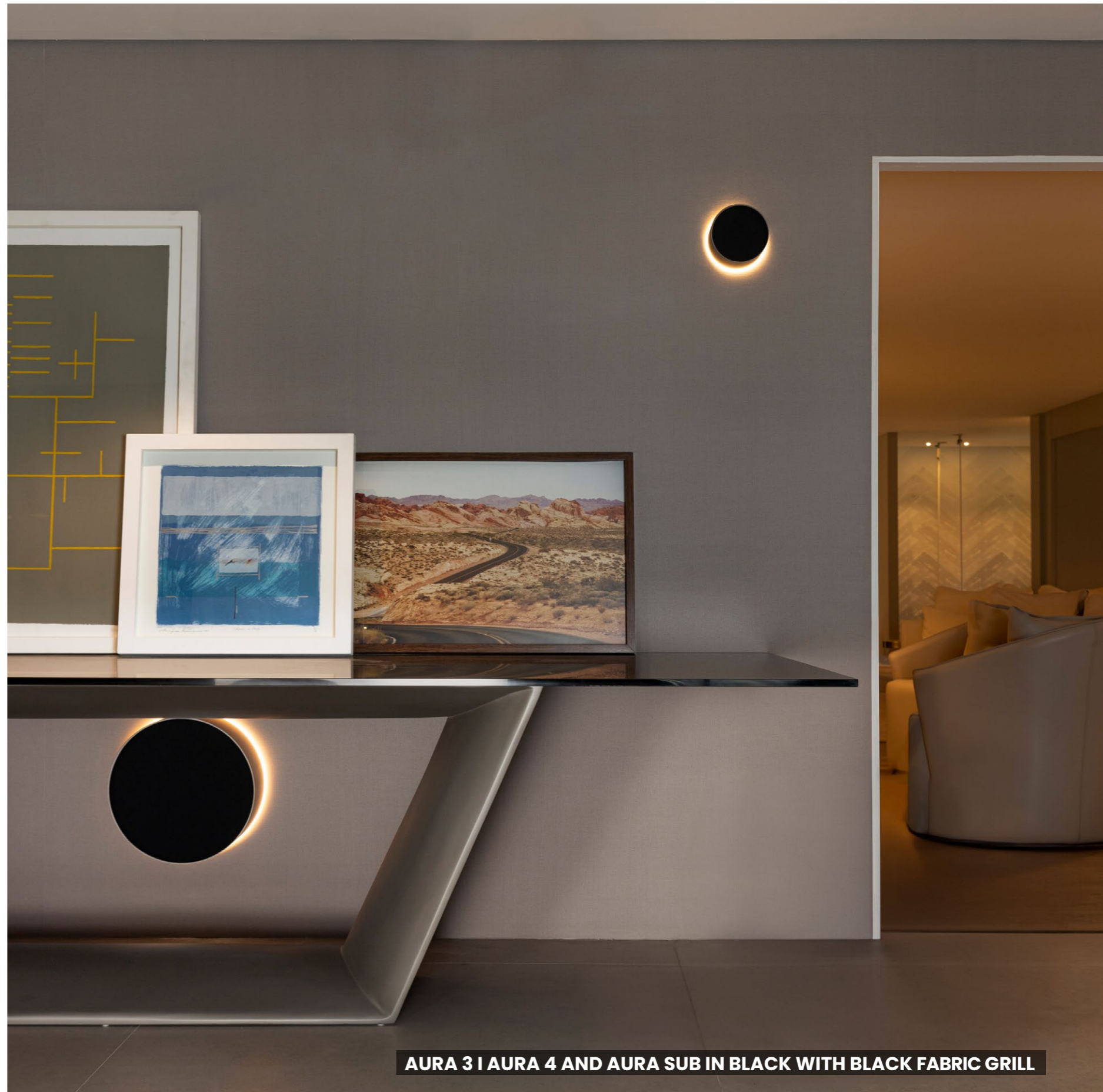
AURA 3 | AURA 4 IN CUSTOM ANODIZED BRONZE AND WHITE ALUMINUM GRILL



AURA 3 | AURA 4 IN CUSTOM ANODIZED NATURAL AND WHITE TEXTURED GRILL



AURA 3 | AURA 4 AND AURA SUB IN SHINY BROWN AND GRAY FABRIC GRILL



AURA 3 | AURA 4 AND AURA SUB IN BLACK WITH BLACK FABRIC GRILL



AURA 5 | AURA 6 IN BLACK AND BLACK FABRIC GRILL



AURA 5 | AURA 6 IN BLACK AND BLACK FABRIC GRILL

OUTLINE SERIES

OUTDOOR | INDOOR

The Outline Series offers a wide range of configurations to fit any type of project. Available with 1, 2, 3, 6, and 12 drivers, it is a versatile solution to be used from the home cinema, in distributed audio, or outdoors.

It is possible to add LED light, even in the soundbar, renewing its outlined style. The series is outdoor rated, including the 2 or 3 channels bars that can be customized to fit any TV or LED Display up to 10ft wide.

The Outline 3D Cinema integrates beauty with sound performance to the best home theater solution. For the best sound experience, the 3D Cinema uses a one-and-a-halfway to deliver incredible quality of mids and high frequencies. The speaker can be installed in as LCR and surround.





OUTLINE LR IN SHINY GRAY WITH WHITE FABRIC GRILL



OUTLINE LR IN WHITE AND WHITE FABRIC GRILL



OUTLINE LR IN BLACK AND TERRA FABRIC GRILL



OUTLINE LR IN SHINY GRAY AND WHITE FABRIC GRILL



OUTLINE LR IN BLACK AND BLACK FABRIC GRILL



OUTLINE 3D CINEMA IN BLACK WITH ALUMINUM GRILL



SOUNDBAR 2 OR 3 CHANNELS IN BLACK AND WHITE FABRIC GRILL



SOUNDBAR 2 OR 3 CHANNELS IN CHAMPAGNE AND TERRA FABRIC GRILL



SOUNDBAR 2 OR 3 CHANNELS IN BLACK AND GRAY MIXED GRILL



MAGNARRAY

OUTDOOR | INDOOR

Magnarray Series is a high-performance column loudspeaker line engineered in a sealed aluminum enclosure. Designed for applications where aesthetics are not the primary requirement, it employs true array principles to deliver exceptional sound dispersion across large indoor or outdoor spaces.

Available in models with 2, 3, 6, or 12 drivers, the Magnarray Series ensures powerful, accurate and immersive audio for multichannel and distributed sound installations.



MAGNARRAY IN BLACK WITH ALUMINUM GRILL



MAGNARRAY IN BLACK WITH ALUMINUM GRILL



MAGNARRAY 12D IN GREEN WITH ALUMINUM GRILL



MAGNARRAY 12D IN GREEN WITH ALUMINUM GRILL

SURFACE SERIES

INDOOR

Surface is a mix of technology, laser-cut, and the hands of artisans. The distinctive design makes it unique in the market, and it can be used as Soundbar or LCR. It can be produced in handmade natural straw or fabric and can be manufactured in custom sizes to match the decoration or TVs.

Surface Series allows the best audio quality to be installed in any decor, bringing the brightness of the LED light to modern or classic ambients.



CUSTOM SOUNDBAR IN BLACK AND BLACK FABRIC FINISHING



SURFACE 1500 IN SAND AND TERRA FABRIC FINISHING



SURFACE 600 IN BLACK AND GRAY MIXED FINISHING



SURFACE 330 IN BLACK AND BLACK FABRIC FINISHING



CUSTOM SOUNDBAR IN BLACK AND BLACK FABRIC FINISHING



SURFACE 600 IN BLACK AND GRAY MIXED FINISHING



SURFACE 330 IN WHITE AND NATURAL STRAW FINISHING



SURFACE 330 IN WHITE AND NATURAL STRAW FINISHING



SURFACE 330 IN SAND AND NATURAL STRAW FINISHING



CUSTOM SOUNDBAR IN BLACK AND BLACK FABRIC FINISHING



CUSTOM SOUNDBAR IN BLACK AND BLACK FABRIC FINISHING

ROCK SERIES

OUTDOOR | INDOOR

Magna's Rock Series products are true works of art, crafted from the finest natural stones from Brazil, Italy, and Spain. The series offers three types of stone: Marble, Granite, and Quartzite, available in a wide range of finishes and styles, including a semi-transparent onyx crystal that can be illuminated. Using aluminum or stainless steel for the other components, the Rock Series products are also ideal for installation in outdoor areas.

There are two subwoofer options: S10 and S12-500. The S10, featuring a 10" driver, is a high-performance component that delivers 300W of power and impressive SPL. It can also be installed without feet, with the drivers facing backward, making it a unique decor piece. The S12-500, recently launched at Cedia Expo 2024, is a powerful 500W RMS subwoofer suitable for both indoor and outdoor use. With its 12" driver and natural stone construction, the S12-500 is designed to deliver deep, impactful bass, making it a standout addition to the Rock Series.

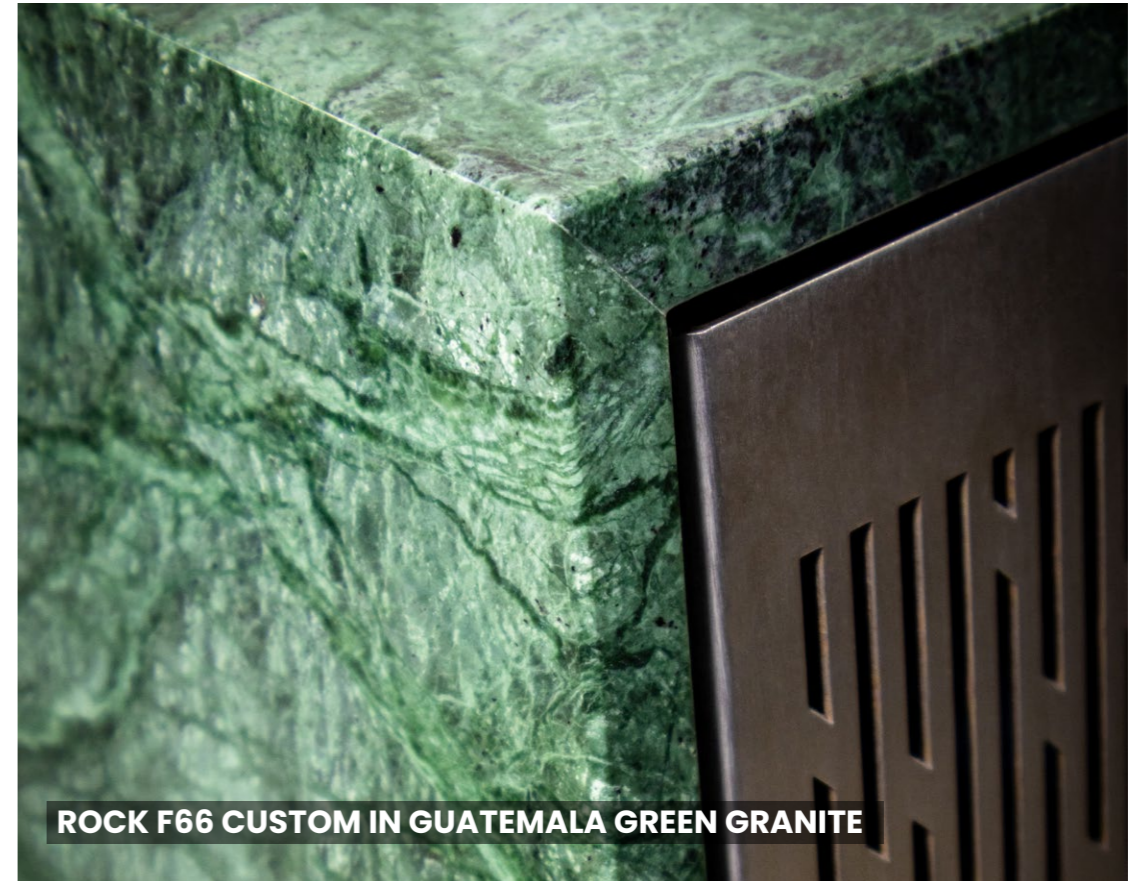
The series also includes a floor-standing model, awarded Best Outdoor Product at Cedia Expo 2022 by rAVE Pubs. This tower features optional linear lighting for regular stones and a remarkable 300W output, outperforming any product in its range for outdoor areas.







ROCK F66 CUSTOM IN ONYX BRAZIL QUARTZITE WITH LED



ROCK F66 CUSTOM IN GUATEMALA GREEN GRANITE



ROCK F66 CUSTOM IN ROMAN RUSTIC TRAVERTINE MARBLE



ROCK F66 CUSTOM IN ONYX BRAZIL QUARTZITE



ROCK S10-300 IN ONYX BRAZIL QUARTZITE WITH LED



ROCK S12-500 IN ABSOLUTE GRAY QUARTZITE



ROCK S12-500 IN GUATEMALA GREEN GRANITE



ROCK S10-300 IN NERO MARQUINA MARBLE



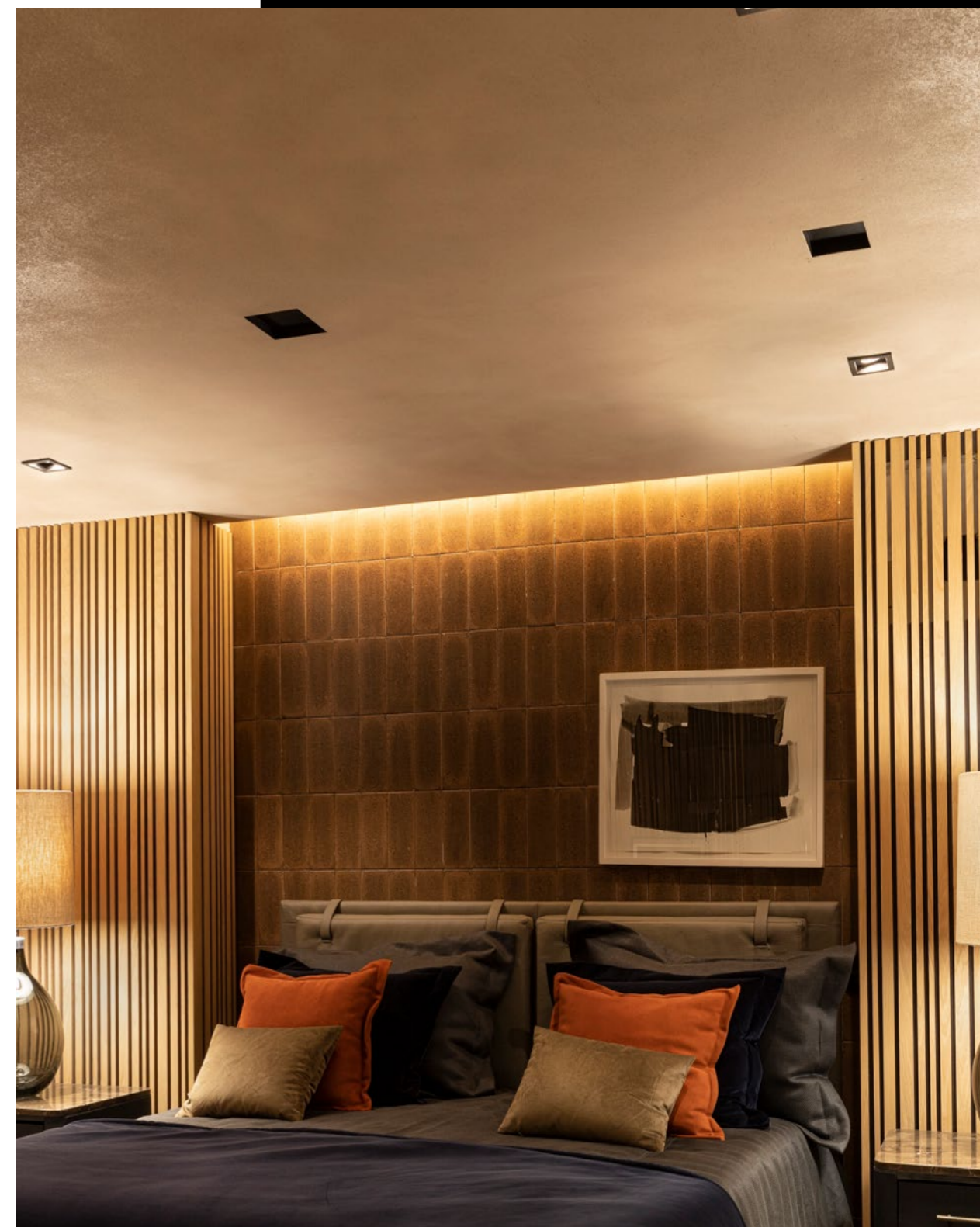
ROCK S10-300 IN CYGNUS GRANITE

NOFRAME SERIES

INDOOR

The NoFrame series of 3" and 4" has a clean and perfect design specially made for environments that use no-frame lighting fixtures with precisely the same finish as the speaker enclosures. The models have smaller sizes, which are compatible with most downlights. 3" model is available in two options, one of them called Extended Bass, which uses a port system to improve performance.

The wide dispersion of the 120 degrees woofer allows installations even at low height. Specially made for environments that use no-frame lighting fixtures and when subwoofers are not present. Clean and perfect square design for rooms where small sizes matter.





NOFRAME 4" ROUND IN BLACK RECESSED GRILL



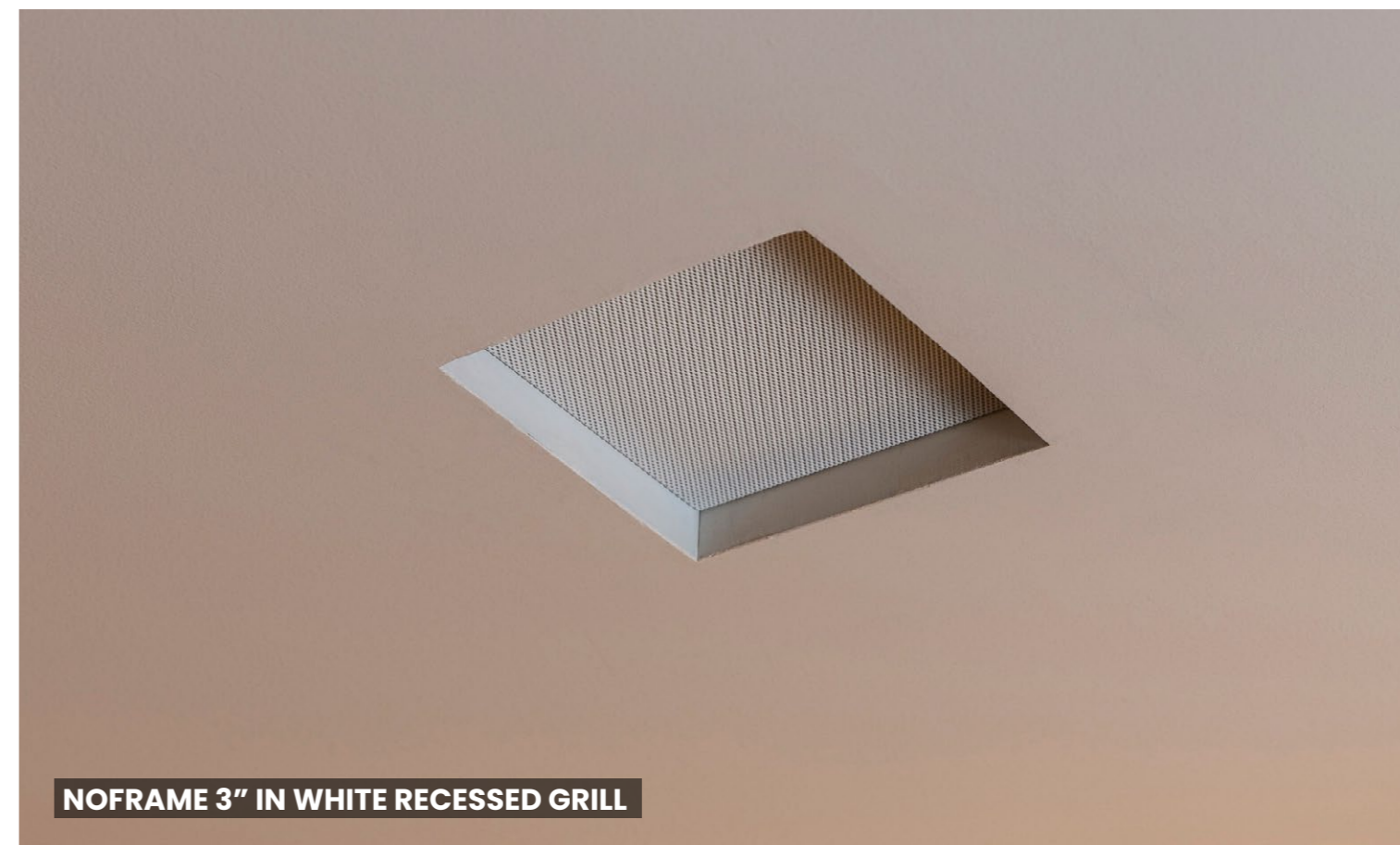
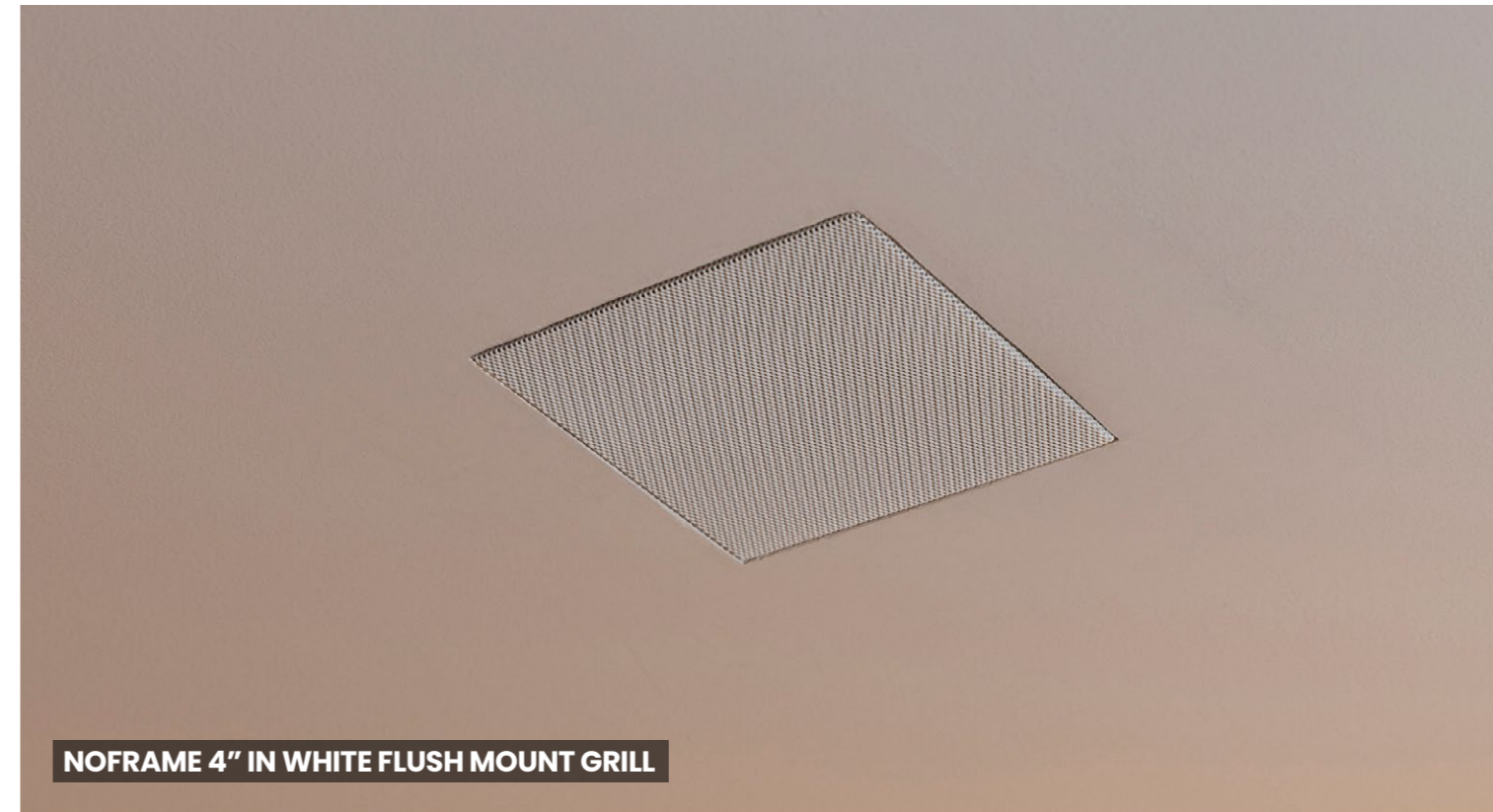
NOFRAME 3" IN BLACK RECESSED GRILL



NOFRAME 3" OR 4" IN WHITE RECESSED GRILL

BANDPASS SUBWOOFER

The NoFrame hidden bandpass subwoofer has the same ceiling style finishing as the other products of its series, allowing perfect discretion. The cut-out is only 5.9", making it the smallest subwoofer output available on the market.





DESIGNED MKII

INDOOR

Designed by Magna is the only speaker series in the world that offers 25 different finishing combinations as standard, besides being the only one in its price range that allows 100% customization directly from the factory.

Handcrafted with a natural leather cabinet finish, it has the front panel in Italian matte gloss or two options of natural wood, and now debuts a refined ebonized front, expanding the design palette of the line.

The series now expands with the new DSF26 floorstanding model, created to deliver a pure stereo experience with an immersive, room-filling soundstage. With its commanding presence and architectural finishes, the DSF26 brings the same craftsmanship to larger spaces, establishing itself as a true statement in both performance and design.

Designed by Magna sounds as beautiful as it is.

NEW

DSF26

The DSF26 is the floorstanding expression of Magna's Designed Series, created to elevate high-end residential audio with architecture-grade finishes and an immersive, room-filling soundstage. Its commanding silhouette and refined details transform living rooms and dedicated listening spaces into environments of emotion and precision. The model debuts the new ebony front, which combines deep grain with a modern profile, and is available in a palette that includes light wood, dark wood, black lacquer, white lacquer, and exclusive editions finished in Italian leather. With clean lines and balanced proportions, the DSF26 integrates seamlessly into both classic and contemporary interiors.

Engineered for an enveloping and precise presentation, the DSF26 delivers articulate detail, stable imaging, and effortless dynamics. It is designed to reveal nuance even at low listening levels and to scale convincingly with authority when driven, making it an ideal choice for dedicated stereo systems. Beyond performance, it stands out for its aesthetic coherence, asserting itself as a statement piece without visual noise. Pairing easily with premium amplifiers and processors, it combines versatility with craftsmanship, where luxury materials and meticulous fit-and-finish uphold the standard of excellence that defines the Designed Series.



**DSF 26 IN ITALIAN DARK GRAY LEATHER
WITH BLACK LACQUER FRONT**



**DSF 26 IN ITALIAN LIGHT CARAMEL LEATHER
WITH BRAZILIAN WALNUT WOOD FRONT**



DSF 26 IN ITALIAN OFF WHITE LEATHER WITH BRAZILIAN OAK WOOD FRONT



DSF 26 IN ITALIAN BLACK LEATHER WITH EBONIZED FRONT



DSF 26 IN ITALIAN LIGHT CARAMEL LEATHER WITH BRAZILIAN WALNUT WOOD FRONT



BOOKSHELF AND CENTRAL IN NATURAL BEIGE LEATHER WITH WHITE LACQUER FRONT



BOOKSHELF IN NATURAL CARAMEL LEATHER WITH WHITE LACQUER FRONT AND SUBWOOFER IN NATURAL CARAMEL LEATHER WITH CUSTOM FRONT



SUBWOOFER IN BLACK NATURAL LEATHER WITH CUSTOM FRONT

SUBWOOFER

Since most homes do not have a dedicated movie theater room, it's the ideal solution for living rooms used as a home theater, as its designs and finishes blend in with the environment and appeal to everyone from the hobbyist to the interior designers.

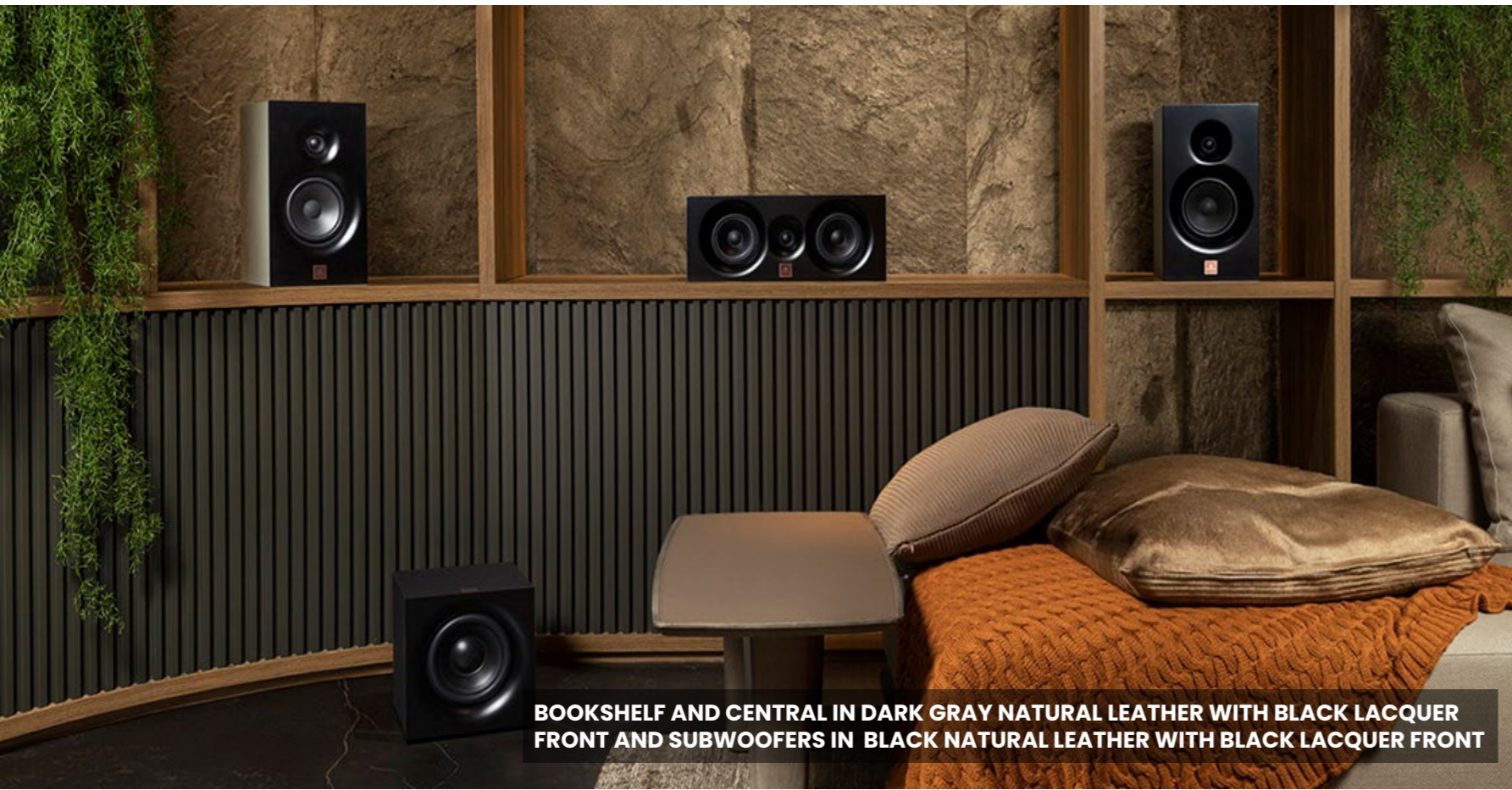
Performance, which is always the first thought of our technical staff, has not been set aside even in the subwoofer that was projected in the smallest possible size as it is always an ungrateful piece for decorators and wives. Be amazed by the performance of the best 10" subwoofers available on the market.

CENTRAL

The Central channel was designed to be as slim as it was possible so that it can be installed under TVs or screens without compromising the height of most racks on the market or requiring the image to be too high.



DESIGNED CENTRAL IN WHITE NATURAL LEATHER WITH WHITE LACQUER FRONT



BOOKSHELF AND CENTRAL IN DARK GRAY NATURAL LEATHER WITH BLACK LACQUER FRONT AND SUBWOOFERS IN BLACK NATURAL LEATHER WITH BLACK LACQUER FRONT



BOOKSHELF CUSTOM OPTION



BOOKSHELF AND CENTRAL IN NATURAL LEATHER BEIGE WITH CUSTOM FRONT



BOOKSHELF CUSTOM OPTION



Live the live sound

magnaudio.com