



ATELIER[®]

tailor-made acoustic panels
patented design

Version: 1.2

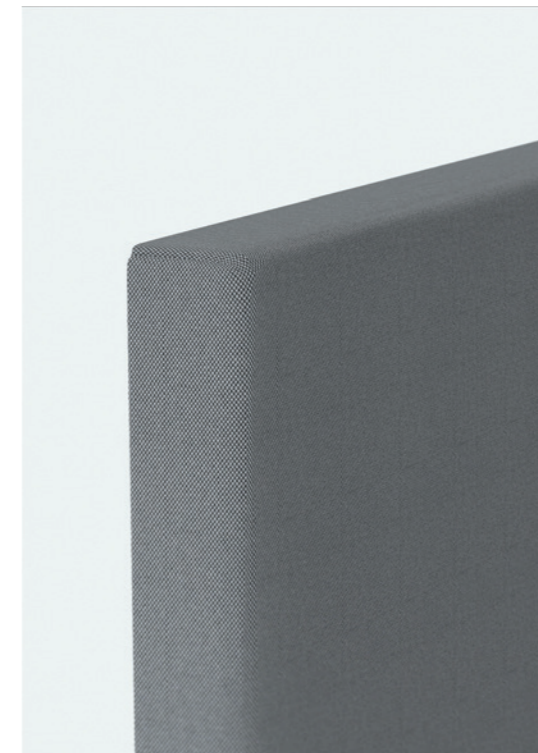
design by Arkimera

EN *Imagine a sartorial collection: the ability to line walls with tailored elements especially crafted for you by skilled craftsmen with the same care used for custom-made suits. This is the most adaptable collection of our production and of panels that can be crafted in different sizes and thicknesses to create new architectural effects. The special texture of our fabrics further enhances the elegance of the surfaces, for a perfect integration with a variety of different architectural and design solutions.*

IT *Immaginate una collezione sartoriale: la possibilità di foderare pareti con elementi a misura realizzati per voi dalla maestria di artigiani dell'imbottito che ricorda da vicino la cura con cui viene cucito un abito a misura. Si tratta della collezione più adattabile della nostra produzione, di pannelli che possono essere realizzati in misure e spessori differenti per creare effetti architettonici inediti. La particolare trama dei nostri tessuti ne esalta la texture superficiale impreziosendola e rendendola abbinabile ad una molteplice varietà di soluzioni spaziali.*

FR *Imaginez une collection vestimentaire : la possibilité de tapisser des murs avec des éléments conçus spécialement pour vous par le savoir-faire d'artisans qui rappelle le soin avec lequel on coud un costume sur mesure. Il s'agit de la collection la plus adaptable de notre production, composée par de panneaux en différentes tailles et épaisseurs, pour créer de nouveaux effets architecturaux. La texture particulière de nos tissus améliore la texture de la surface, qui peut être combinée avec une variété de solutions architecturales.*

DE *Stellen Sie sich eine Modekollektion vor: Sie können Wände mit maßgeschneiderten Elementen auskleiden, die von erfahrenen Handwerkern wie bei Maßanzügen speziell für Sie angefertigt wurden. Dies ist die anpassungsfähigste Kollektion unserer Produktion und Paneelen, die in verschiedenen Größen und Dicken gefertigt werden können, um neue architektonische Effekte zu erzielen. Die spezielle Textur unserer Stoffe verstärkt die Eleganz der Oberflächen und ermöglicht eine perfekte Integration in eine Vielzahl unterschiedlicher Architektur- und Designlösungen.*



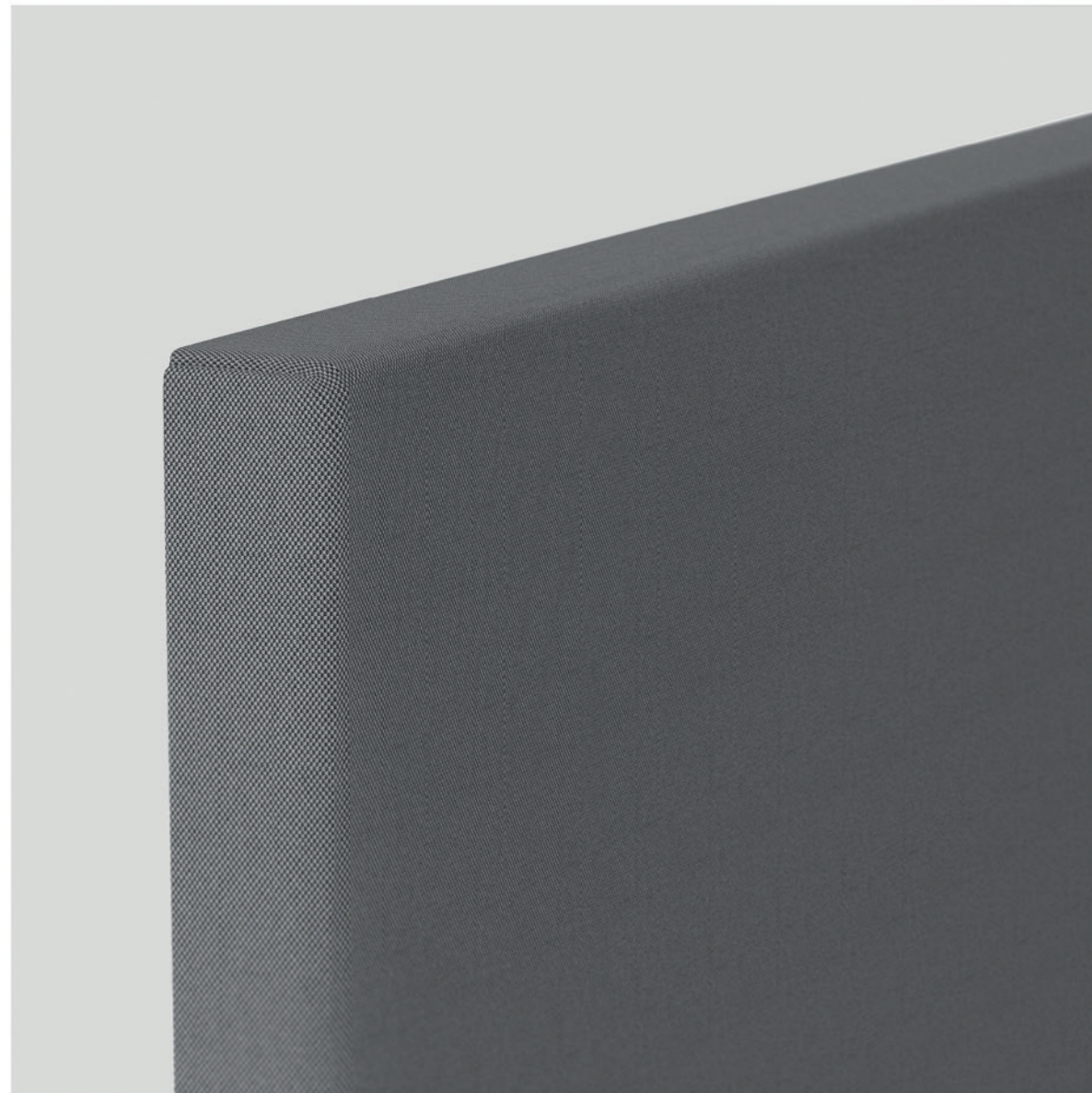


ATELIER®
sizes 60x60 / 60x120
fabric TAYLOR finish

Speakers
Garvan Ceramic Drop

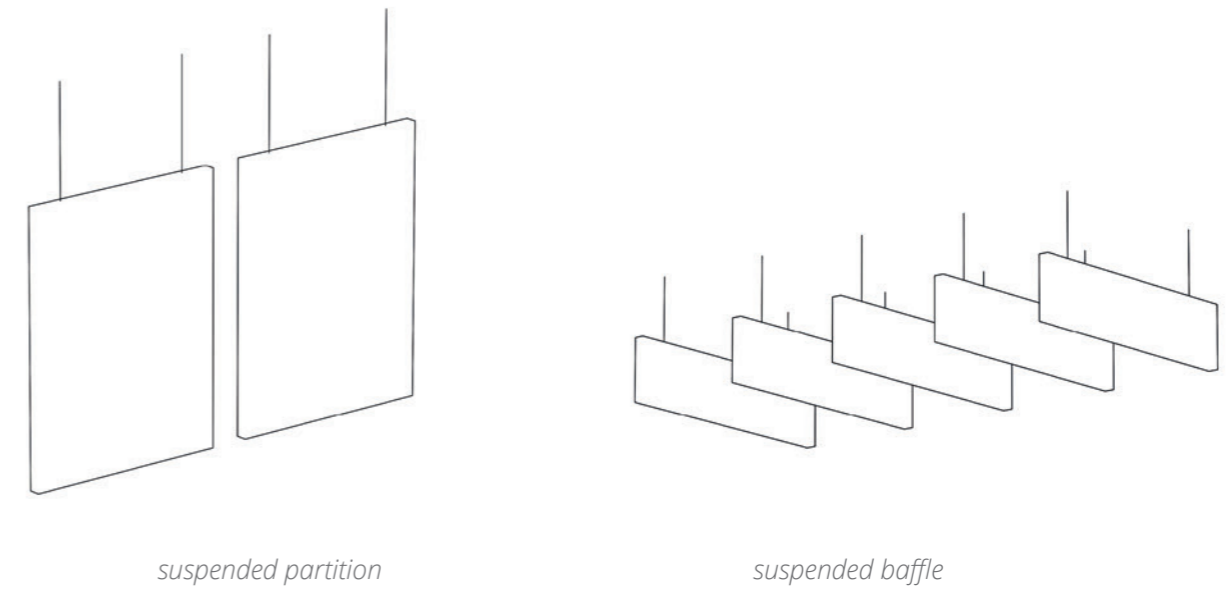
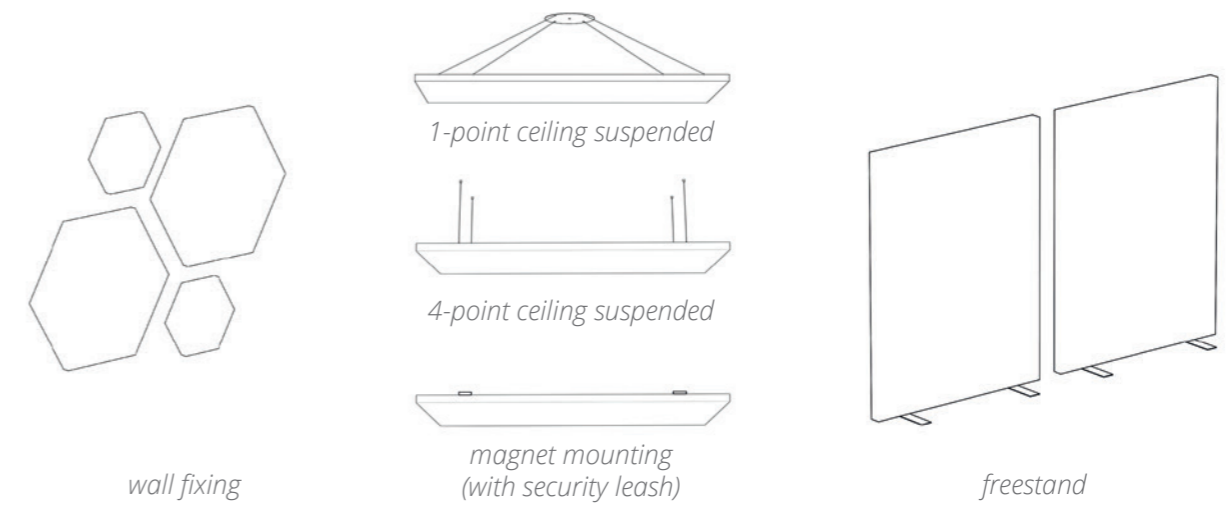


ATELIER®
custom size fabric TAYLOR finish

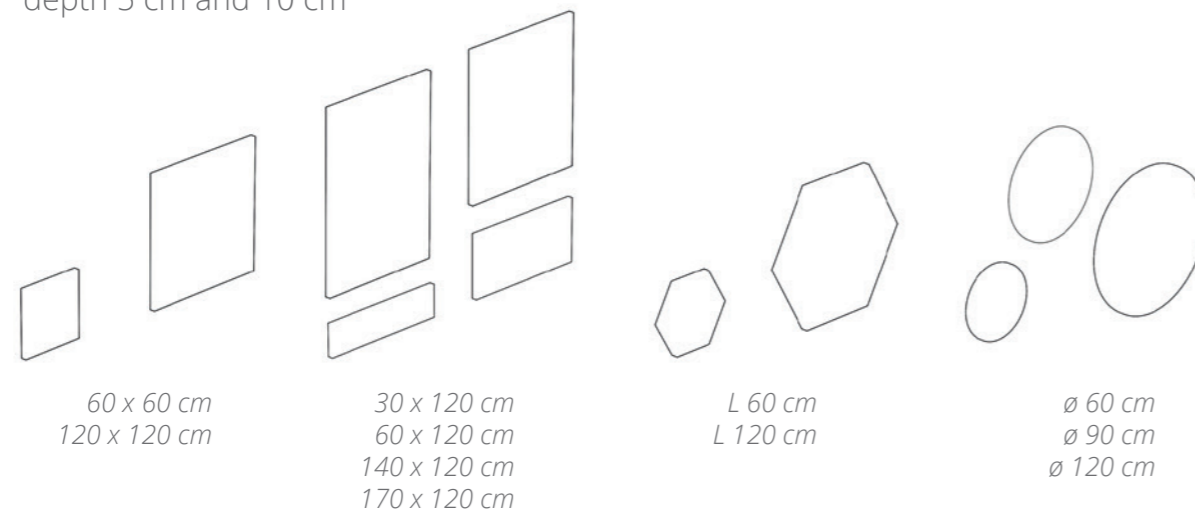


fabric Eco and Taylor finish

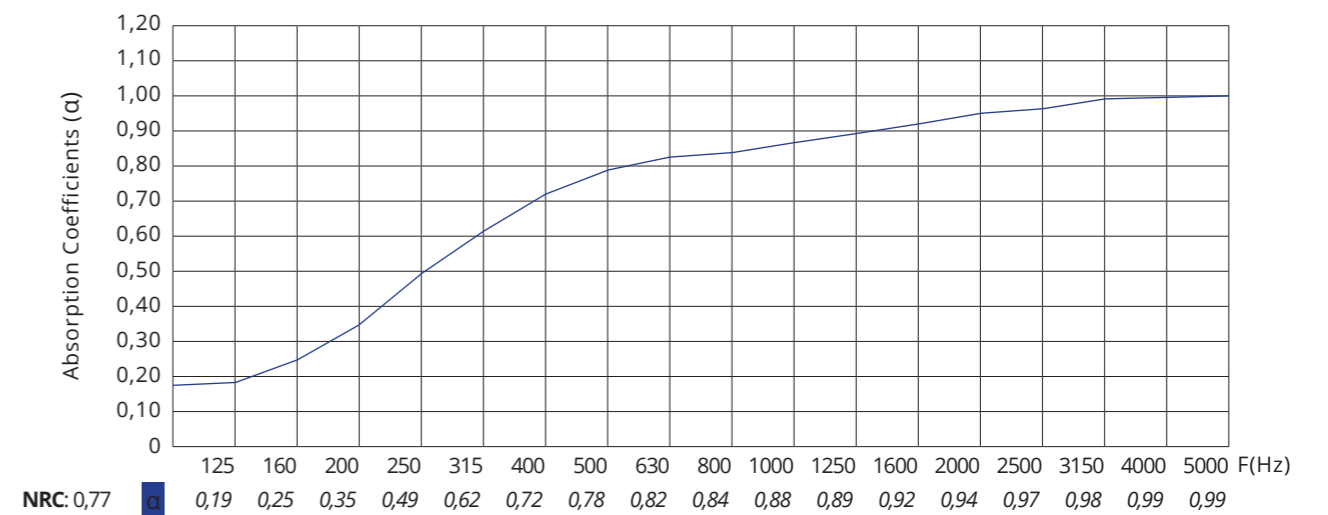
FIXING SYSTEMS



SIZES (custom-made on request)
depth 5 cm and 10 cm



SOUND ABSORPTION ■ Atelier™ finish fabric 5 cm



ECO *fabric / tessuto*

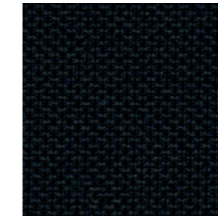
Microbaffle® /Parquet® /Surface®
Area™ /Atelier® / Cinematelier®
collection

EN An environmentally friendly knit fabric made from 100% yarn resulting from the reuse of plastic bottles. Eco is naturally unravelable, it is a compact technical fabric with a slightly three-dimensional appearance typical of jersey.

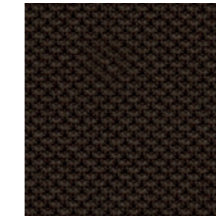
IT Tessuto a maglia enviromentally-friendly realizzato con il 100% da filato derivante dal riuso di bottiglie in plastica. Eco risulta indemagliabile per sua natura, si presenta come tessuto tecnico e compatto con aspetto leggermente tridimensionale tipico del jersey.

FR Tricot écologique, complètement fabriqué à partir de fil issu de la réutilisation de bouteilles en plastique. Eco est indémaillable, un tissu technique compact avec un aspect légèrement tridimensionnelle typique du jersey.

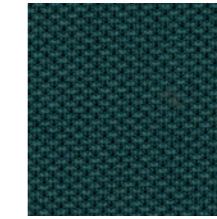
DE Umweltfreundliche Knitgewebe, Garn 100% aus der Wiederverwendung von Kunststoffflaschen. Eco ist maschenfest, ein kompakter technischer Stoff mit einem dreidimensionalen Stil, der typisch für Jersey ist.



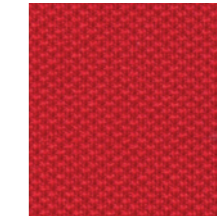
TE01



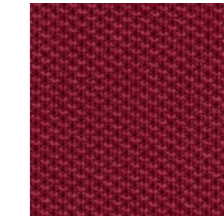
TE27



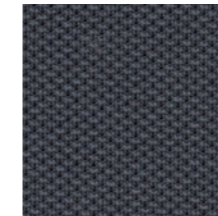
TE15



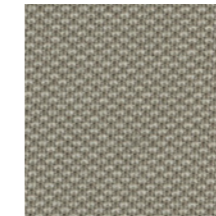
TE39



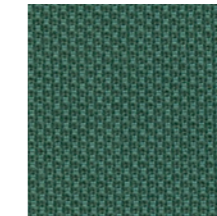
TE35



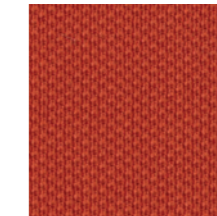
TE02



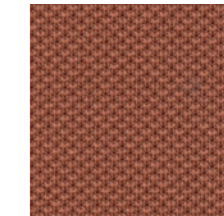
TE24



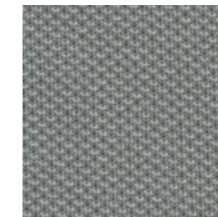
TE11



TE32



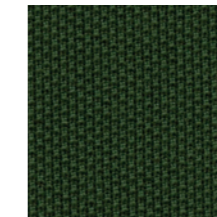
TE34



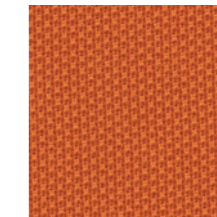
TE04



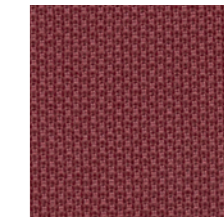
TE23



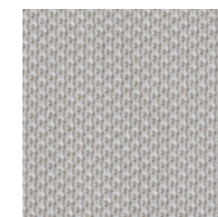
TE08



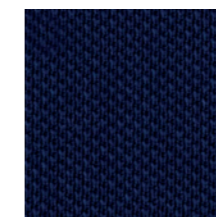
TE31



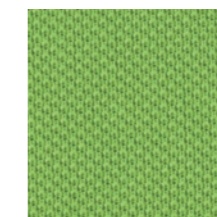
TE36



TE06



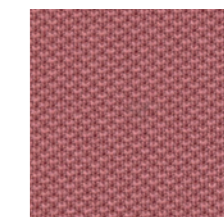
TE21



TE10



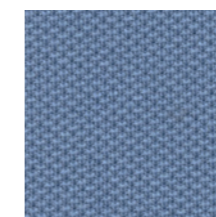
TE29



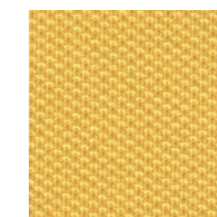
TE37



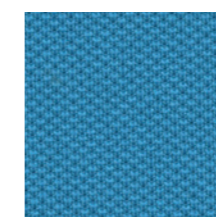
TE07



TE19



TE28



TE17

COMPOSITION: 100% Recycled Polyester
ABRASION RESISTANCE: UNI ISO 12947/2 100.000
FLAMMABILITY: EN1021/1-2 CRIB 5 BS 7176
Medium Hazard California TB117 UNI 9175 Class 1IM
OEKO-TEX STANDARD 100

EN The colours shown are purely indicative.

IT I colori riportati sono indicativi.

FR Les couleurs présentées sont indicatives.

DE Die angeführten Farben gelten lediglich als Beispiel.

TAYLOR *fabric / tessuto*

Atelier® /CinemAtelier® collection

EN Produced with Trevira CS yarn, it is a very velvety, cotton-like fabric. It is compact and features alternating colours making up an elegant and refined texture.

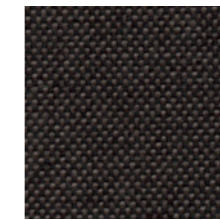
IT Prodotto con filato Trevira CS, è un tessuto al tatto molto vellutato e simile al cotone. Risulta compatto e caratterizzato da cromie alternate che compongono la sua texture conferendogli una elegante raffinatezza.

FR Fabriqué avec fils Trevira CS, il s'agit d'un tissu très velouté, semblable au coton. Très compact, il est caractérisé par une géométrie de couleurs qui donnent forme à sa texture élégante.

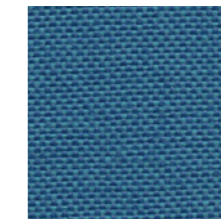
DE Aus Trevira CS Garn hergestellt, es geht um einen sehr samtigen, baumwollähnlichen Stoff. Er ist kompakt und zeichnet sich durch abwechselnde Farben aus, die seine elegante Textur ausmachen.



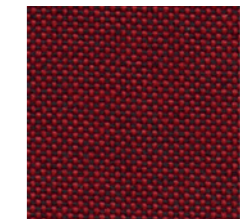
TT01



TT26



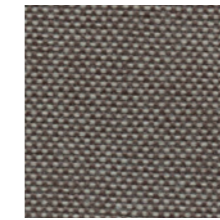
TT12



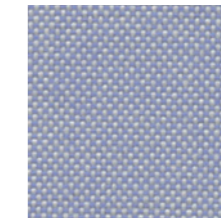
TT34



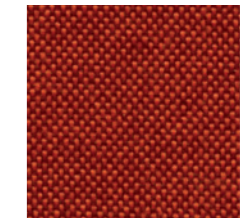
TT02



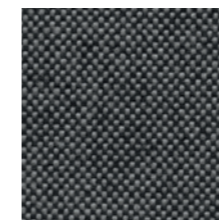
TT25



TT15



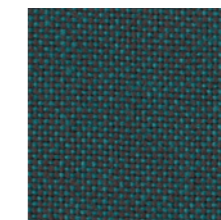
TT32



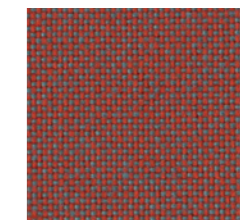
TT03



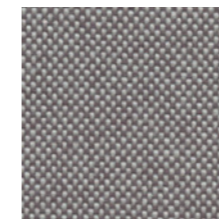
TT24



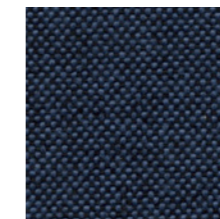
TT13



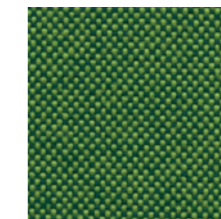
TT31



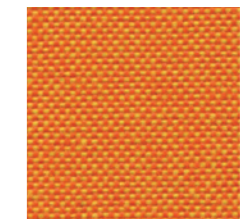
TT04



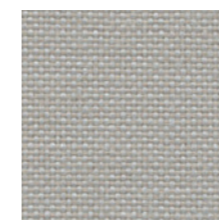
TT17



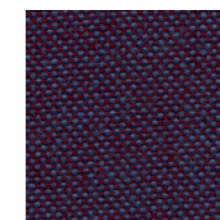
TT09



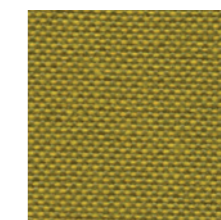
TT30



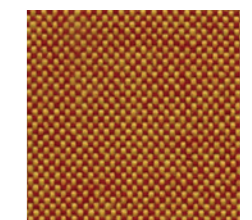
TT05



TT19



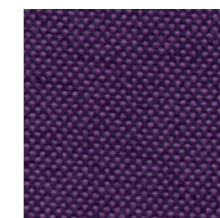
TT08



TT28



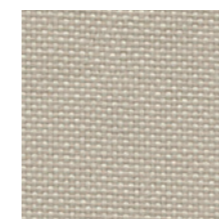
TT23



TT20



TT06



TT22

COMPOSITION: 100% Polyester
ABRASION RESISTANCE: UNI ISO 12947/2 100.000
 +- 10% martindale
FLAMMABILITY: EN1021/1-2 CRIB 5 BS 7176
 Medium Hazard California TB117 UNI 9175 Class 1JM
OEKO-TEX STANDARD 100

EN The colours shown are purely indicative.

IT I colori riportati sono indicativi.

FR Les couleurs présentées sont indicatives.

DE Die angeführten Farben gelten lediglich als Beispiel.

Project ARKIMERA

Art Direction ARKIMERA

Translation Studioin3.com

Garvan Acoustic S.R.L. owns the Garvan Acoustic Wellness brand and all the models in this catalogue. Garvan Acoustic S.R.L. reserves the right to make technical and dimensional changes and to introduce improvements that could change the aesthetics of the products in this catalogue. The printed colour references are not binding.

Garvan Acoustic S.R.L. è proprietaria del marchio Garvan Acoustic Wellness e di tutti i modelli presenti all' interno del catalogo. Garvan Acoustic S.R.L. si riserva il diritto di apportare modifiche tecniche, dimensionali e di introdurre miglioramenti che potrebbero cambiare l'estetica dei prodotti presentati in catalogo. I riferimenti colore stampati non sono vincolanti.

Garvan Acoustic S.R.L. est propriétaire de la marque Garvan Acoustic Wellness et de tous les modèles présentés dans ce catalogue. Garvan Acoustic S.R.L. se réserve le droit de procéder à des modifications techniques et dimensionnelles et d'introduire des améliorations susceptibles de modifier l'esthétique des produits présentés dans ce catalogue. Les références de couleurs imprimées ne sont pas contractuelles.

Garvan Acoustic S.R.L. besitzt die Marke Garvan Acoustic Wellness und alle im Katalog vorgestellten Produkte. Garvan Acoustic S.R.L. behält sich das Recht vor, technische und maßliche Änderungen sowie Verbesserungen vorzunehmen, die die Ästhetik der im Katalog vorgestellten Produkte verändern könnten. Die aufgedruckten Farbangaben sind unverbindlich.



Via Vittori, 21/1-2
48018 Faenza (Ra) Italy
Tel. +39 (0546) 682097
garvan@garvanacoustic.com
OFFICIAL 3+1+1 YEAR WARRANTY

Follow us on:



www.garvanacoustic.com