



cinemATELIER™
tailor-made sound solutions for your tv

design by Arkimera

Immaginate una collezione sartoriale: la possibilità di foderare pareti con elementi a misura realizzati per voi dalla maestria di artigiani dell'imbottito che ricorda da vicino la cura con cui viene cucito un abito a misura. Si tratta della collezione più adattabile della nostra produzione, di pannelli che possono essere realizzati in misure e spessori differenti per creare effetti architettonici inediti. La particolare trama dei nostri tessuti ne esalta la texture superficiale impreziosendola e rendendola abbinabile ad una molteplice varietà di soluzioni spaziali.

Imagine a sartorial collection: the ability to line walls with tailored elements especially crafted for you by skilled craftsmen with the same care used for custom-made suits. This is the most adaptable collection of our production and of panels that can be crafted in different sizes and thicknesses to create new architectural effects. The special texture of our fabrics further enhances the elegance of the surfaces, for a perfect integration with a variety of different architectural and design solutions.

Imaginez une collection vestimentaire : la possibilité de tapisser des murs avec des éléments conçus spécialement pour vous par le savoir-faire d'artisans qui rappelle le soin avec lequel on coud un costume sur mesure. Il s'agit de la collection la plus adaptable de notre production, composée par de panneaux en différentes tailles et épaisseurs, pour créer de nouveaux effets architecturaux. La texture particulière de nos tissus améliore la texture de la surface, qui peut être combinée avec une variété de solutions architecturales.


Stellen Sie sich eine Modekollektion vor: Sie können Wände mit maßgeschneiderten Elementen auskleiden, die von erfahrenen Handwerkern wie bei Maßanzügen speziell für Sie angefertigt wurden. Dies ist die anpassungsfähigste Kollektion unserer Produktion und Paneelen, die in verschiedenen Größen und Dicken gefertigt werden können, um neue architektonische Effekte zu erzielen. Die spezielle Textur unserer Stoffe verstärkt die Eleganz der Oberflächen und ermöglicht eine perfekte Integration in eine Vielzahl unterschiedlicher Architektur- und Designlösungen.





cinemATELIER
tailor-made sound solutions for your tv



 **cinemATELIER**
central channel + left and right speakers



 **cinemATELIER**
sound bar



 **cinemATELIER**
symmetrical lateral panels



cinemATELIER
custom speakers solution

 **cinemATELIER**
asymmetrical lateral panels



SA112N

Type 2 way coax
Power RMS/Max (W) 50/100
Loudspeaker (Ø cm) 13,0
Dim. (cm) 25,0 x 25,0 x 8,0
Impedance (Ω) 8



SA213N

Type 2 way
Power RMS/Max (W) 75/150
Woofer Tweeter (Ø cm) 13,0/2,5
Dim. (cm) 25,0 x 36,0 x 8,0
Impedance (Ω) 8



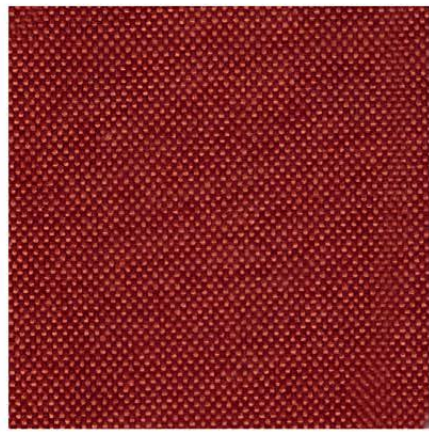
SA313N

Type Left, Center, Right
Power RMS/Max (W) 150/300
Woofer Tweeter (Ø cm) 2x13/2,5
Dim. (cm) 25,0 x 50,0 x 8,0
Impedance (Ω) 8

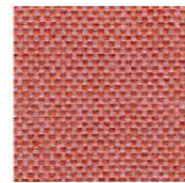


SA316N

Type 2 way passive radiator
Power RMS/Max (W) 75/150
Woofer Tweeter (Ø cm) 16 + PS/2,5
Dim. (cm) 25,0 x 50,0 x 8,0
Impedance (Ω) 8



TT35



TT36



TT34

TAYLOR

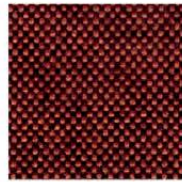
tessuto / fabric

Prodotto con filato Trevira CS è un tessuto al tatto molto vellutato e simile al cotone. Risulta compatto e caratterizzato da cromie alternate che compongono la sua texture conferendogli una elegante raffinatezza.

Produced with Trevira CS yarn, it is a very velvety, cotton-like fabric. It is compact and features alternating colours making up an elegant and refined texture.

Fabriqué avec fils Trevira CS, il s'agit d'un tissu très velouté, semblable au coton. Très compact, il est caractérisé par une géométrie de couleurs qui donnent forme à sa texture élégante.

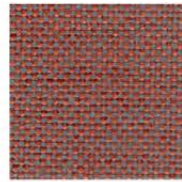
Aus Trevira CS Garn hergestellt, es geht um einen sehr samtigen, baumwollähnlichen Stoff. Er ist kompakt und zeichnet sich durch abwechselnde Farben aus, die seine elegante Textur ausmachen.



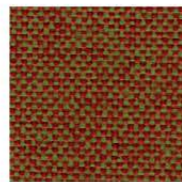
TT33



TT32



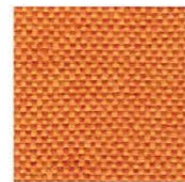
TT31



TT28



TT29



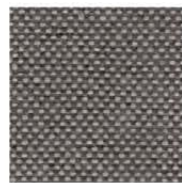
TT30



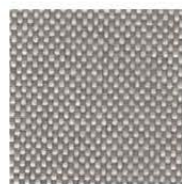
TT27



TT26



TT25



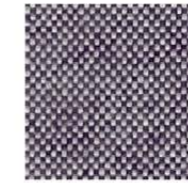
TT24



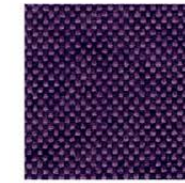
TT23



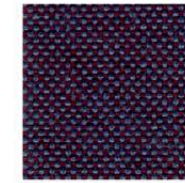
TT22



TT21



TT20



TT19

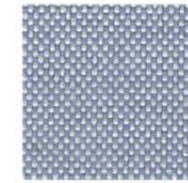
COMPOSITION: 100% Polyester
ABRASION RESISTANCE: UNI ISO 12947/2 100.000 +- 10% martindale
FLAMMABILITY: EN1021/1-2 CRIB 5 BS 7176 Medium Hazard
 California TB117 UNI 9175 Class 1 | M
OEKO-TEX STANDARD 100



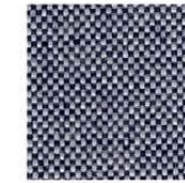
TT17



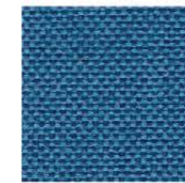
TT18



TT15



TT16



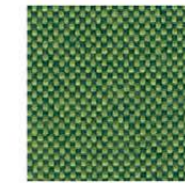
TT12



TT13



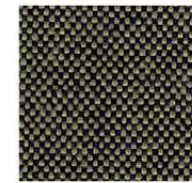
TT14



TT09



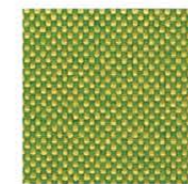
TT10



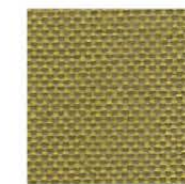
TT11



TT06



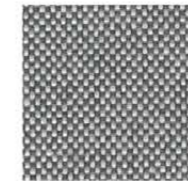
TT07



TT08



TT05



TT04



TT03



TT02



TT01

Project Arkimera

Art Direction Arkimera

Translation Studioin3.com

Garvan Acoustic S.R.L. è proprietaria del marchio Garvan Acoustic Wellness e di tutti i modelli presenti all'interno del catalogo. Garvan Acoustic S.R.L. si riserva il diritto di apportare modifiche tecniche, dimensionali e di introdurre miglioramenti che potrebbero cambiare l'estetica dei prodotti presentati in catalogo. I riferimenti colore stampati non sono vincolanti.

Garvan Acoustic S.R.L. owns the Garvan Acoustic Wellness brand and all the models in this catalogue. Garvan Acoustic S.R.L. reserves the right to make technical and dimensional changes and to introduce improvements that could change the aesthetics of the products in this catalogue. The printed colour references are not binding.

Garvan Acoustic S.R.L. est propriétaire de la marque Garvan Acoustic Wellness et de tous les modèles présentés dans ce catalogue. Garvan Acoustic S.R.L. se réserve le droit de procéder à des modifications techniques et dimensionnelles et d'introduire des améliorations susceptibles de modifier l'esthétique des produits présentés dans ce catalogue. Les références de couleurs imprimées ne sont pas contractuelles.

Garvan Acoustic S.R.L. besitzt die Marke Garvan Acoustic Wellness und alle im Katalog vorgestellten Produkte. Garvan Acoustic S.R.L. behält sich das Recht vor, technische und maßliche Änderungen sowie Verbesserungen vorzunehmen, die die Ästhetik der im Katalog vorgestellten Produkte verändern könnten. Die aufgedruckten Farbangaben sind unverbindlich.



Via Vittori, 21/1-2
48018 Faenza (Ra) Italy
Tel. +39 (0546) 682097
garvan@garvanacoustic.com

OFFICIAL 3+1+1 YEAR WARRANTY

Acoustic Wellness 2020 V 1.2

Follow us on:



www.garvanacoustic.com